

International Workshop on Spatial Enablement of Government and NSDI - policy implications

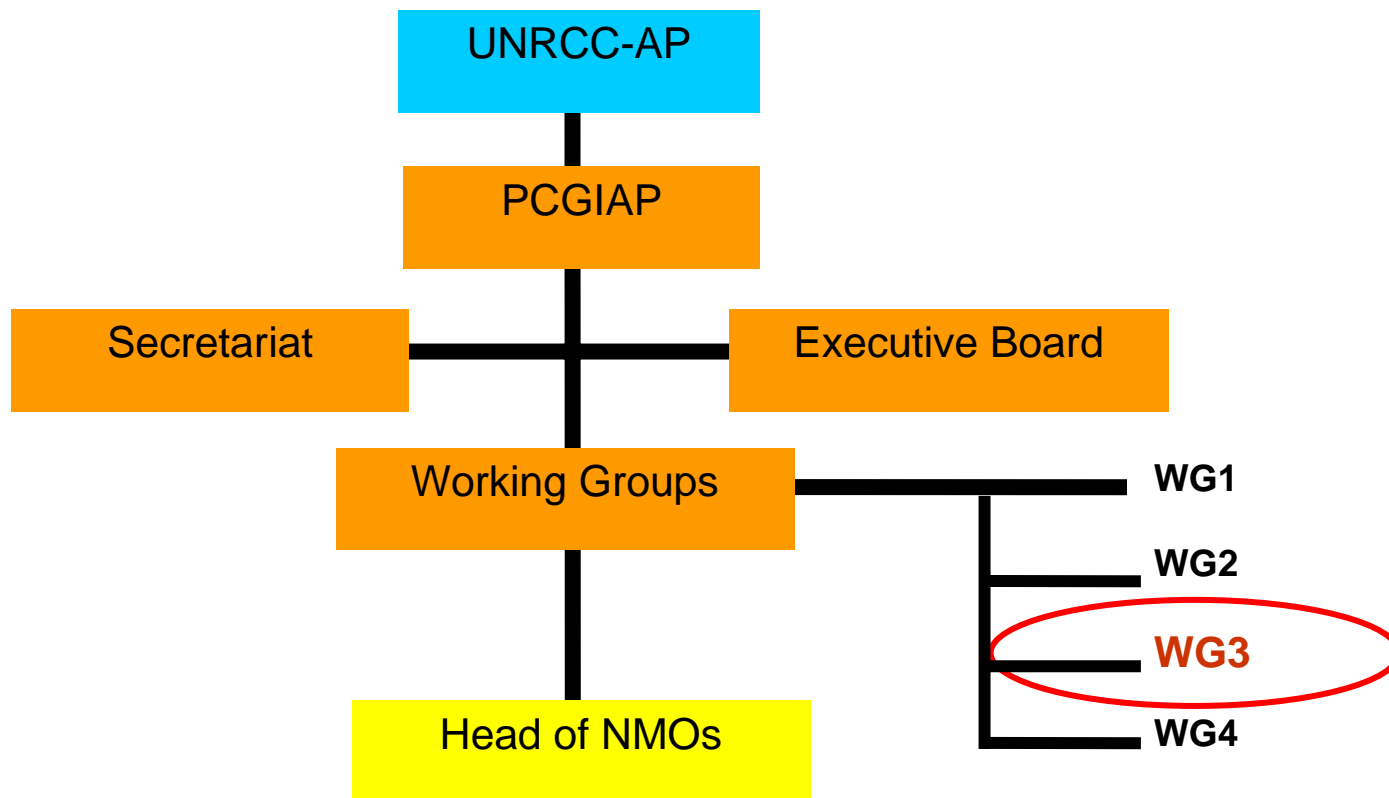
Overview of PCGIAP-WG3 and Spatially Enabled Government

Abbas Rajabifard
Vice Chair, PCGIAP-WG3

WG3 - Spatially Enabled Government

- WG3 was originally the ‘**Cadastre**’ working group (until 2006 when re-named WG3 on **Spatially Enabled Government**).
- This was a result of the need of the society and technology development, and in order to be inline with this development and to leverage off the achievements over the last six years, WG3 now focuses on the development of ***spatially enabled government***.

WG3 and PCGIAP Organisational Structure



PCGIAP-WG3

- Established in **2000** based on a Resolution from the 15th UNRCC-AP in Malaysia.
- With the expert assistance of relevant organisations such as FIG and IHO, undertake work into and facilitate discussion on:
 - development of the Asia-Pacific SDI;
 - development of regional marine cadastral infrastructure and marine administration;
 - realisation of economic, social and environmental benefits for the region; and
 - the implementation of the United Nations Conference on Environment and Development (UNCED) Agenda 21; and that:
 - explore the relationship between the operations of the cadastre or land administration system in each member country and the development of their spatial data infrastructures at local, state and national levels.

PCGIAP-WG3

Major activities over past 6 years include:

- Successfully completed two major projects (cadastral template and marine administration projects) and one well underway (data integration project),
- Successfully organised three international workshops,
- Established three dedicated websites for completed and current projects, and
- Successful and widely disseminated publication strategy.

Chair:

Prof Ian Williamson
University of Melbourne
AUSTRALIA

Vice-Chair:

Mr.Ahmad Fauzi bin Nordin
Department of Survey and Mapping
MALAYSIA

Vice Chair:

Associate Prof Abbas Rajabifard
University of Melbourne
AUSTRALIA

WG3 - Spatially Enabled Government

- Since 17th UNRCC-AP meeting, Bangkok 2006, WG3 now focuses on the development of **spatially enabled government**. From this, a new **vision** and **objectives** for WG3 future direction and its activities has been undertaken, which focuses on the concept of ***spatially enabling government***. This includes work on:
 - Concepts and principles of spatially enabled government
 - Design requirements of spatially enabled government
 - Issues associated in the development of spatially enabled government including: Institutional; Technical; Policy and Socio-economic
 - Relationship between SDI and LA (Cadastre) to support spatially enabled government
 - Capacity building for spatially enabled government.

Enabling Platform

- Individual organisations work as a collaborative network,
- Based on common standards and business understanding,
- Combines distributed functions provided by participating organisations to deliver services,
- Structured and managed as to be seen by third parties as a single enterprise.

Significance of SDIs

- Support integrated decision making for substantial and sustainable development,
- Reduce duplication-cost and efforts,
- Provide better data for decision making,
- Support new business processes/create new business opportunities in geospatial industry.

SDI and Enabling Platform - Definition

Enabling platform provides appropriate technical, governance and legal structure to link **data** and **services, products**, and real world objects underpinning a ***Spatially Enabled Government and Society***.

Key activities of WG3 since 17th UNRCC-AP Conference 2006, Bangkok, Thailand

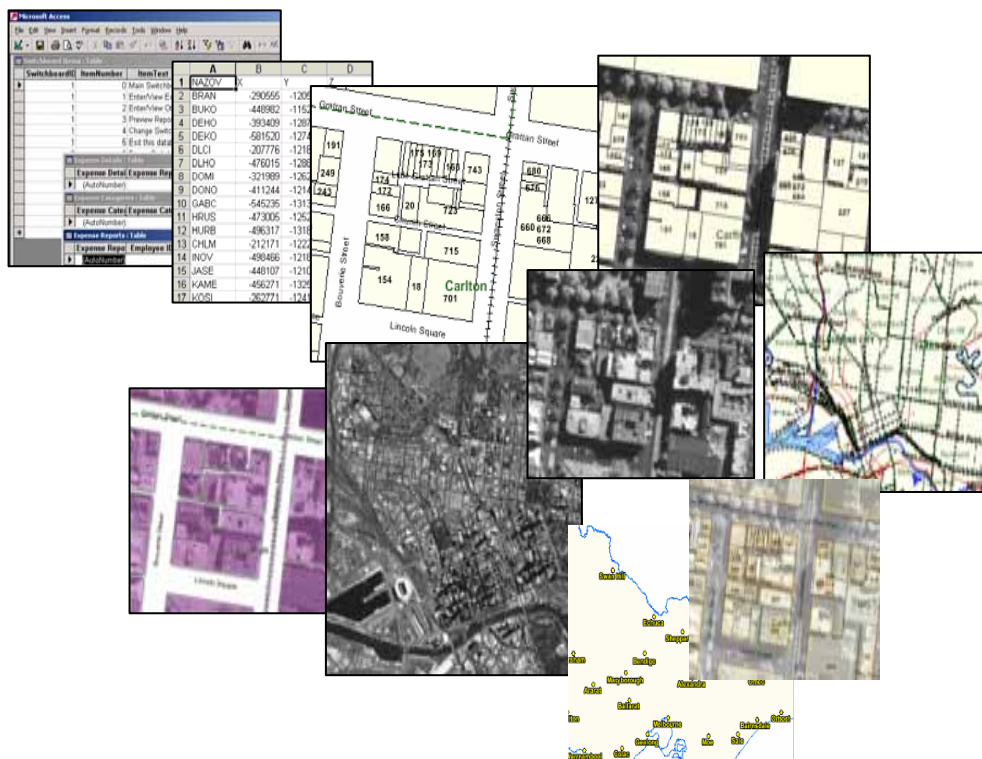
Activity 1. International Workshop on “Spatial Enablement of Government and NSDI – Policy implications”

Preparation for this workshop.

Activity 2. Integration of Built (cadastral) and Natural (topographic) environmental datasets within National SDIs

One of the major initiatives of WG3 over the last two years is work on the project of the *“Integration of Built (cadastral) and Natural (topographic) environmental datasets within National SDI initiatives.*

Integration of Different Datasets

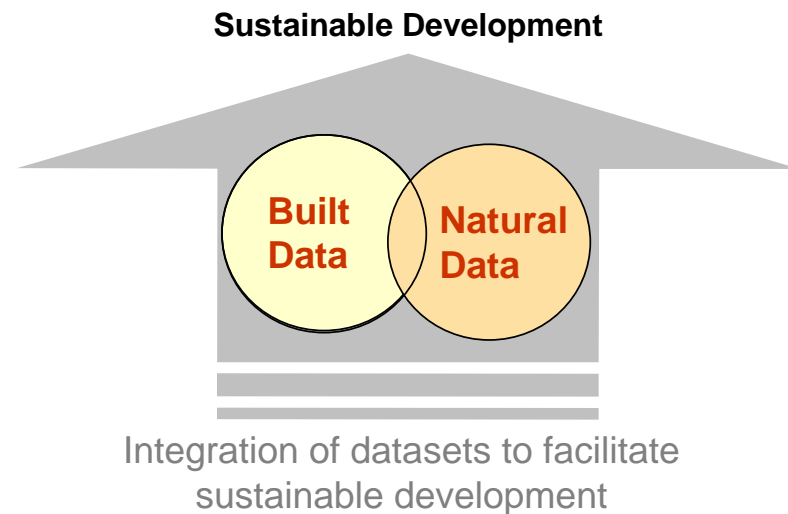


Activity 2. Integration of Built (cadastral) and Natural (topographic) environmental datasets within National SDIs

The aim of this project is to better understand and describe the **technical, jurisdictional, institutional, legal and land policy perspective** surrounding the two foundation datasets (cadastral and topographic) in a National SDI.

Activity 2. Integration of Built (cadastral) and Natural (topographic) environmental datasets within National SDIs

The project is investigating the justification for integrating these two forms of spatial data in support of **sustainable development** and develop **a model / framework** and **associated tools** capable of being used in diverse jurisdictions using case study approach.





Home & Background

Int. Workshop

Research Aims

Case Studies

Publications

Contact us

UNRCC-AP & PCGIAP International Workshop on Data Integration

ARC Linkage Project - the Integration of Built and Natural Environmental Datasets in National Spatial Data Infrastructure Initiatives

This project is an Australian Research Council Linkage Project involving researchers from the Centre for Spatial Data Infrastructure and Land Administration at the University of Melbourne and three industry partners, as listed below. The project also involves collaboration with Working Group 3 (Cadastre) of the UN supported Permanent Committee for GIS Infrastructure for Asia Pacific (PCGIAP), which helps to involve seven different countries in the project.

Project Partners
Project Duration
Personnel
Project Overview
Project Background

Project Partners

 DSE, Victoria	 Department of Lands, NSW	 Geoscience Australia
-------------------	------------------------------	--------------------------

Activity 3. International Workshop on Integration of Built and Natural environmental datasets within National SDIs

- As part of data integration project an International Workshop was conducted as part of the 17th UNRCC-AP in Thailand in September 2006.
- **40 people** attended the workshop from **18 different countries and international organisations.**
- Further information on the integration project can be found at the dedicated project website http://www.geom.unimelb.edu.au/research/SDI_research/Integrated/ or through the PCGIAP-WG3 web page.

Activity 4. Cadastral Template Project

- As part of the WG3 workplan, WG3 has continued its effort to promote the project and responses to the Cadastral Template and has maintained and updated the Cadastral Template website until end of 2006 (according to the WG3 workplan).
- However, due to the importance of this project and its value for all countries and international organisations such as FIG, PCGIAP and others, **it is now maintained and run by FIG Commission 7** (through a request from FIG and in agreement with PCGIAP-WG3).

Activity 4. Cadastral Template Project

- Currently **40 country reports** on cadastral systems are placed to this website.
- Analysis of these reports has been undertaken over the past year, culminating in the creation of a technical paper titled “**Assessing the Worldwide Comparison of Cadastral Systems**” which summarises the results of the analysis. This paper has been published in the International Journal of Land Use Policy (Jan 2007).



PCGIAP-Working Group 3
"Cadastré"



THE UNIVERSITY OF
MELBOURNE
The University of Melbourne
Department of Geomatics



FIG-Commission 7
"Cadastré and Land Management"

Cadastral Template

A Worldwide Comparison of Cadastral Systems

Cadastral country reports based on a jointly developed PCGIAP/FIG template.
Established under UN mandate by [Resolution 4 of the 16th UNRCC-AP](#) in Okinawa, Japan in July 2003.
UN endorsement for cooperation with [UN-ECE WPLA](#), [UN-ECA CODI](#), and [PCIDEA](#).

Data per Country

(last update: 7 Jun. 2004, 35 countries)

as .htm

as .pdf

Field Definitions

I. Data per Data Fields

(last update: 1 Jan. 2005, 35 countries)

II. Principles and Statistics

(last update: 1 Jan. 2005, 35 countries)

- 1.1 Cadastral Principles
- 2.1 Population
- 2.3 Parcels
- 2.7 Professionals

Documents

- Questionnaires for Download (English, Español, Portugues).
- Publications
- Administrative Documents
- Web Statistics

Latest Updates

- Country report of [Namibia](#) as 35th country (7 Jun. 2004)
- Country report of [Venezuela](#) (in Spanish) as 34th country (28 May 2004)
- Country report of [Mexico](#) (also in English) (28 Apr. 2004)
- Country report of [Mexico](#) (in Spanish) as 33rd country (18 Apr. 2004)
- Publication in the [Hong Kong Journal of Geospatial Engineering](#) (3 Mar. 2004)
- Questionnaires available also in Spanish and Portuguese (5 Feb. 2004)

The "Cadastral Template" has been developed by a research group at the Department of Geomatics of the University of Melbourne. It consisted of Prof. Ian Williamson, Dr. Abbas Rajabifard, and Daniel Steudler, supported by Prof. Stig Enemark from Aalborg University, Denmark.

PCGIAP-Working Group 3 "Cadastré" cooperates with FIG-Commission 7 to place the country information jointly on this website and to maintain the information during its 2003-2006 Work Plan.

For providing or updating your country data, please contact:
- for PCGIAP members: Dr. Abbas Rajabifard, abbas.r@unimelb.edu.au

WG3 Future Direction and Workplan

WG3-Workplan (2007-2009)

No	Activities/Steps	Date
1	International Workshop on “Spatial Enablement of Government and NSDI – Policy Implications”	June 2007 13th PCGIAP Meeting
2	Analysis of the result of the workshop and refine the WG3 workplan in line with the initiative on spatial enablement of government	July-Sept 2007
3	Work on the concept of spatially enabling government, including work on: <ul style="list-style-type: none"> • Concepts and principles of spatially enabled government • Design requirements of spatially enabled government • Issues associated in the development of spatially enabled government including: Institutional; Technical; Policy and Socio-economic • Relationship between SDI and LA (Cadastre) to support spatially enabled government • Capacity building for spatially enabled government. 	Oct. 2007- 2009
4	Work on Data Integration Project as part of the Integration of Built and Natural Environmental datasets in the context of National SDI initiatives	Dec. 2007
5	Report on outcomes of WG3 activities (including analysis of current projects, recommendations, future plan, etc.)	PCGIAP Meetings



Thank you