



13th PCGIAP-GSDI Workshop

12th June 2007

GSDI support for Spatial Enablement
of Government and NSDI

Bas Kok,
President- elect GSDI

GSDI 6 workshop Budapest 2002: Spatial Data Infrastructures/ Policy development (1)

Presentation successful SDI policy initiatives in Europe:

- INSPIRE initiative of the European Commission
 - Actions for coordination in European member states: standards, datasets
 - New European Commission regulation (directive) based on Aarhus Convention
 - Harmonized SDI throughout Europe

GSDI 6 workshop Budapest 2002: Spatial Data Infrastructures/ Policy development (2)

- EULIS project
 - Unified Land Information Service initiative
 - Joint project Cadastres Scandinavia, Austria, UK, Lithuania and NL
- EC Directive for the re use of public sector information in the European Union
- GINIE project: European strategy for GI by Eurogi
- Dutch spatially enabled Government SDI

Legal economic workshop Europe 2002

GSDI publication

Spatial data infrastructure and
policy development in Europe and
the United States

<http://www.library.tudelft.nl/dup/leaflets/2467.html>



INSPIRE

Policy drivers:

- Arhus Convention (1998)
- White Paper on European Governance (EC 2001)
- The European Sustainable Development Strategy (EU 2001)

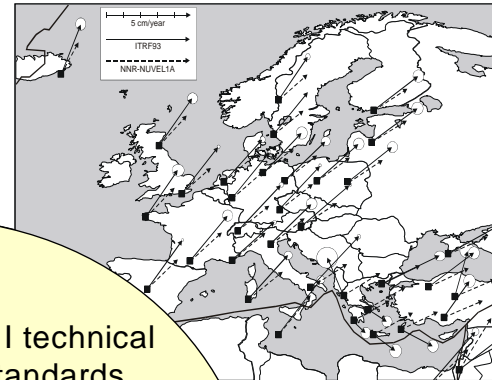
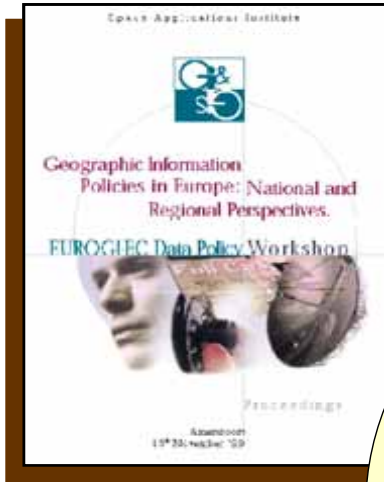
INSPIRE:

What does it include?

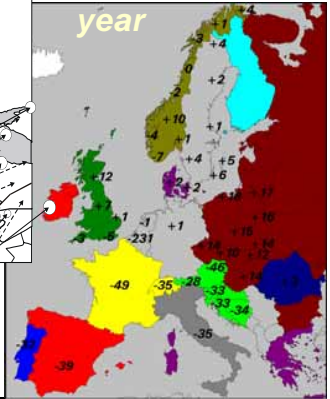
- INSPIRE lays down **general rules** for the establishment of an infrastructure for spatial information in Europe to support environmental policies and policies that affect the environment
- This infrastructure shall be based on infrastructures for spatial information established and operated by the Member States
- INSPIRE requires also specific **implementing rules** to be adopted through a committee procedure representing Member States

INSPIRE framework

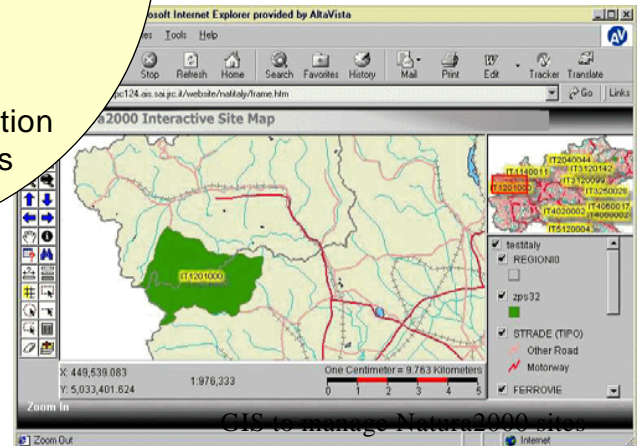
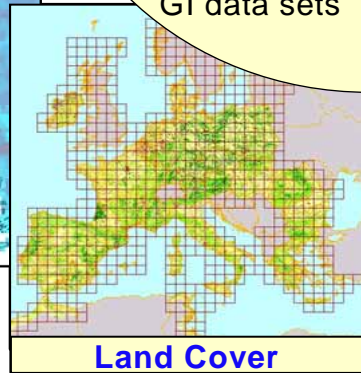
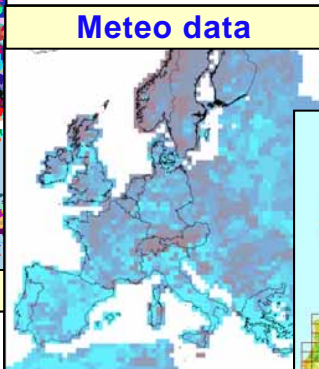
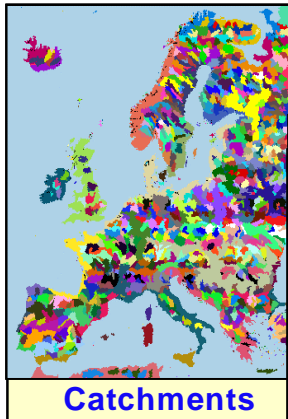
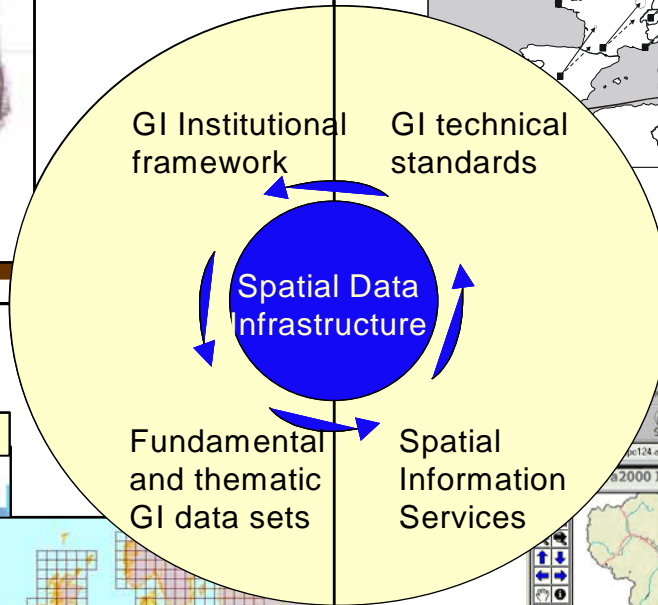
Different Policies and standards



Europe is moving 3cm/year



Different sea levels in Europe



GIS to manage Natura 2000 sites

Need to create pan-European spatial data sets

eEurope : eGovernment on line

INSPIRE Principles

- Data should be collected once and maintained at the level where this can be done most effectively
- Combine seamlessly spatial data from different sources and share it between many users and applications
- Spatial data should be collected at one level of government and shared between all levels
- Spatial data needed for good governance should be available on conditions that are not restricting its extensive use
- It should be easy to discover which spatial data is available, to evaluate its fitness for purpose and to know which conditions apply for its use

eu2006.fi

Finland's EU Presidency

[Home](#) | [English](#) | [Français](#) | [Text version](#) | [Text +](#) | [Text -](#)
[Calendar](#) | [News and Documents](#) | [Media Services](#) | [The Presidency](#) | [EU and Policy Areas](#) | [Finland](#)

- » [Sort by news type](#)
- » [Sort by policy area](#)
- » [Newsletters](#)
- » [Front page news](#)
- » [News and documents in German](#)
- » [News subscription](#)

Press release, Transport, Telecommunications and Energy, Environment

European Parliament and Council reach agreement on spatial information directive

22 Nov 2006, 10:14 [en](#) [fi](#)

The European Parliament and Council reached agreement last night on the contents of the proposed INSPIRE Directive, which aims to harmonise spatial information across Europe.

Key points resolved during the final stages of the discussions between the institutions included the principles according to which citizens should be allowed to examine the official maps and other spatial data covered by the directive, and rules for granting authorities access to data held by other authorities. Copyright issues were also discussed in detail.

The directive will oblige EU member states to improve the administration of their map services and other spatial data services according to common principles. This will give Europe's citizens better opportunities to find useful information about the environment and other issues from the internet. It will also enable the authorities to benefit more from information compiled by other official organisations.

Data search services designed for the public will generally be free of charge, although the directive allows fees to be charged for access to data that has to be updated frequently, such as weather reports.

"I'm very satisfied that a solution has now been found," said Finnish Environment Minister Jan-Erik Enestam. "I believe that the new directive will create a solid basis for the future development of spatial data infrastructures at national and European level, and also enable high quality data bases and information services to be run in the member states."

The INSPIRE Directive is now likely to be enforced from summer 2007. The directive has been designed to control various aspects of the spatial data in the possession of authorities around Europe, including:

1. the creation of metadata, 2. technical developments promoting interoperability, 3. the use of data services, 4. principles on access to data and the related charges, and 5. national co-ordination.

The implementation of the directive will be a considerable challenge for the authorities who maintain electronic maps and spatial data bases on the themes specified in the annexes to the directive. Metadata will have to be regularly updated, and existing information should be made more widely available through harmonised electronic data services, although the directive does not require any new data to be collected.

To implement the directive, interest groups will have to collaborate closely on the development of common official practices. This will affect the work of the authorities at many levels, right down to municipal administrators. The European Commission has estimated that the measures needed to implement the new directive will cost member states a total of around 3-5 million euros a year over a period of about ten years.

[Background to the INSPIRE Directive](#)

- » [Advanced search](#)
- » [Sitemap](#)
- » [Contact us](#)

» [Minister Tuomioja's EU diary](#)

» [Conspectus rerum Latinus](#)





- Subject
The EU and its institutions
Justice and citizenship
External relations
Agriculture and fisheries
Budget
Culture and education
Economic and monetary affairs
Employment and social affairs
Internal market and industry
Regions and transport
Health and environment
All subjects
Press room
Agenda
Info
Background
Plenary sessions
National angle
Highlights
Audiovisual facilities
TV
Radio
Photo
Planning office
External relations
Contact
Press service
Audiovisual
Hotline-Newsdesk

Info

Better geographical data: conciliation agreement on INSPIRE
Environment - 22-11-2006 - 12:54

Europe needs better map-based information to support its policies, especially on the environment. A new database designed to achieve this - known as INSPIRE - which could be in place by early 2009, was agreed late Tuesday evening in conciliation. Parliament and the Council struck a deal which will enable data to be shared across the EU, without undermining high quality services in the Member States.

INSPIRE (Infrastructure for Spatial Information in the Community), a project put forward by the European Commission in July 2004, aims to pool and improve the standard of geographical data generated in the various EU Member States (such as satellite images, temperature records, rainfall levels) in order to improve the planning and implementation of Community policies in areas such as the environment, transport, energy and agriculture. This should lead to better understanding of problems such as floods or air and water pollution, which recognise no national borders.

After two readings by Parliament and Council under the co-decision procedure, the chief points of disagreement remaining between MEPs and EU governments were intellectual property rights, derogations to the sharing of spatial data and the financial viability of publicly owned bodies. All these points were settled at a conciliation meeting on 21 November, with the outcome being described as a "fantastic result" by Frieda Brepoels (EPP-ED, BE), who piloted the legislation through Parliament. "We had hoped for an agreement at first reading but meanwhile our proposal developed", she said.

Data protection, confidentiality and intellectual property rights

Parliament successfully insisted that the directive should not conflict with the provisions of the Aarhus Convention on access to environmental information nor with Directive 2003/4/EC by which the convention is implemented in the EU - a point stressed by the chair of the EP delegation to the Conciliation Committee, Alejo Vidal-Quadras (EPP-ED, ES). In this connection, the Council agreed to drop its amendment seeking to allow broad derogations to the application of the 2003 directive on grounds of confidentiality of statistics or of personal data, the wording of the amendment being judged too vague by MEPs. This decision was, according to the negotiators, one of the keys to reaching an agreement.

However, Member States will, for example, be able to restrict public access to network consultation services displaying panoramic views where there is a risk to international relations, public security or national defence. They will also be allowed to limit access to e-commerce services on a range of grounds (confidentiality of proceedings of public authorities; international relations, public security or

Ambitious target

INSPIRE: three important core data clusters

- Three annexes
 - Important reference core data sets
 - Essential/crucial data sets
such as: Land Information/Cadaastre
 - Thematic data set

From Commission proposal to Community Directive implementation

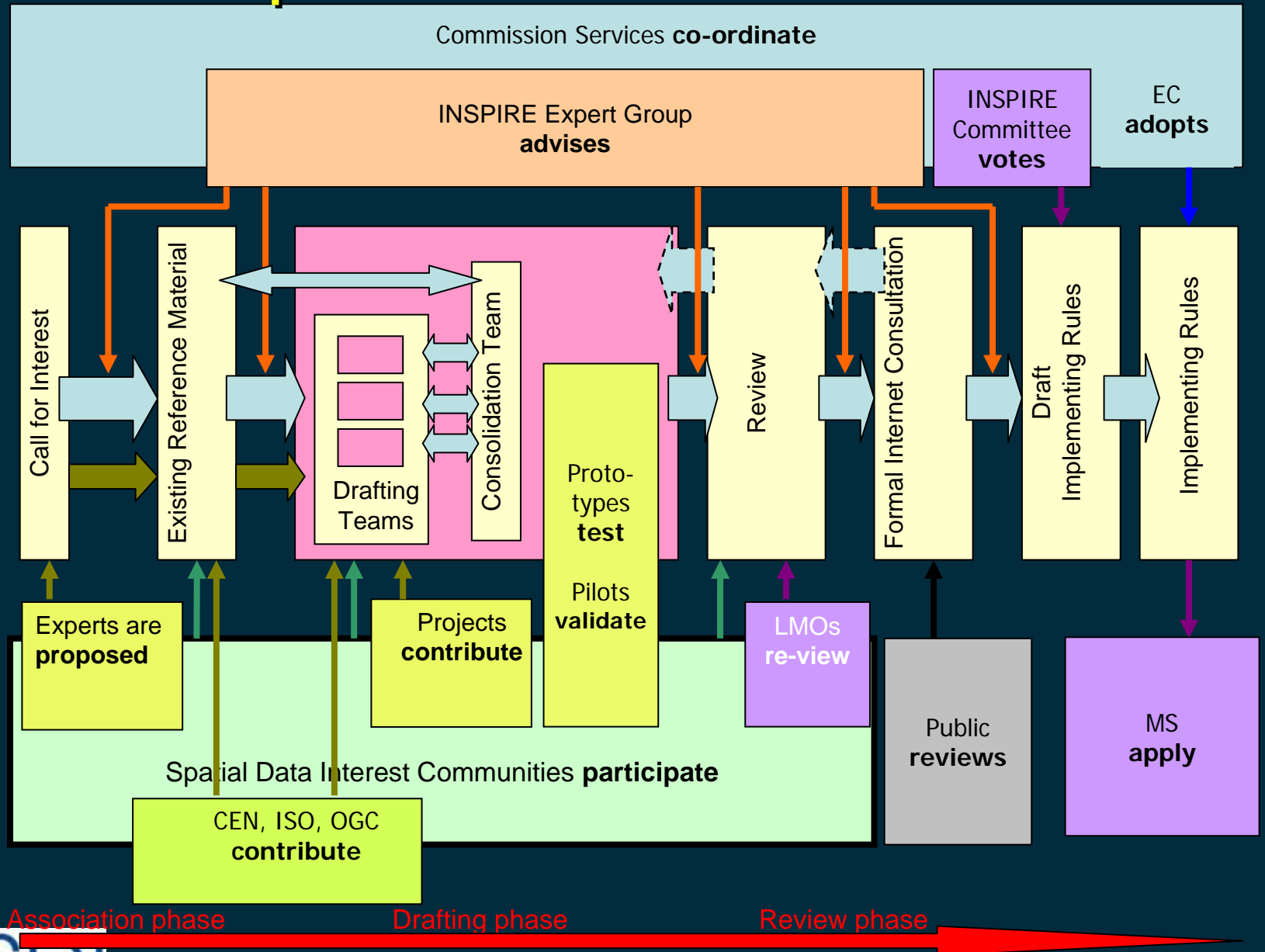
- Preparatory phase (2004-2006)
 - *Co-decision procedure*
 - Preparation of Implementing Rules
- Transposition phase (2007-2008)
 - Directive enters into force
 - Transposition into national legislation
 - INSPIRE Committee starts its activities
 - Adoption of Implementation Rules by Committology
- Implementation phase (2009-2013)
 - implementation and monitoring of measures



INSPIRE Components

- Metadata
- Spatial data sets and spatial data services
- Network services and technologies (discovery, view, download, link, transform, and the EU geo-portal)
- Agreements on sharing, access, and use
- Coordination and monitoring mechanisms
- Process and procedures

INSPIRE process



Timetable

| Milestone* | Milestone | Description |
|------------|-------------------------|--|
| 2007 | X | Entry into force of INSPIRE Directive |
| 2007+3m | X+3months | Establishment of the INSPIRE Committee |
| 2007 | X+1 year at the latest | Adoption of Implementing Rules for the creation and up-dating of the metadata Adoption of Implementing Rules for network services Adoption of Implementing Rules on third parties use of the upload services Adoption of Implementing Rules for monitoring and reporting Adoption of Implementing Rules governing access and rights of use to spatial data sets and services for Community institutions and bodies |
| 2009 | X+2 years at the latest | Adoption of Implementing Rules for the use of spatial data sets and services by third parties |
| 2009 | X+2 years | Adoption of Implementing Rules for harmonised spatial data specifications and for the exchange of Annex I spatial data |
| 2009 | X+2 years | Provisions of Directive are brought into force in MS (transposition date) |
| 2009 | X+2 years | Designation of responsible public authorities for spatial data sets and services |
| 2009 | X+2 years | Implementation of sharing framework of spatial data sets and services between public bodies |
| 2009 | X+2 years | Implementation of provisions on monitoring |
| 2009 | X+2 years | Network services are operational |
| 2010 | X+3 years | Metadata available for spatial data corresponding to Annex I and Annex II spatial data |
| 2010 | X+3 years | Member States' First Report to the Commission. From then onwards MS have to present reports every 3 years |
| 2011 | X+4 | New or updated spatial data sets available in accordance with Implementing Rules for harmonised spatial data specifications and exchange for Annex I spatial data |
| 2012 | X+5 | Adoption of Implementing Rules for harmonised spatial data specifications and for the exchange of Annex II and Annex III spatial data |
| 2013 | X+6 | Metadata available for Annex III spatial data |
| 2014 | X+7 | New or updated spatial data sets available in accordance with Implementing Rules for harmonised spatial data specifications and exchange for Annex II and Annex III spatial data |

Eulis project

- Unified Land Information service initiative
- Joint project Cadastres Scandinavia, Austria, UK, Lithuania and NL

Participants EULIS



Kadaster

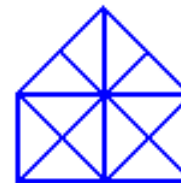
LANTMÄTERIET



LUNDS TEKNISKA
HÖGSKOLA
Lunds universitet



MAANMITTAUSLAITOS



Norsk
Eiendomsinformasjon as

REGISTERS OF SCOTLAND
Executive Agency



PSI Directive of the EC

improving access public sector information

- Data policy framework Re use public sector information in the EU
- Conditions pricing and access rules for EU public sector organizations
- Participation of the Spatial Information sector in the preparatory phase of the European legislation
- Policy drivers:
 - Increasing need for EU cross border information exchange
 - Increasing access for EU public sector information
 - Stimulus for private companies for the re use of public sector information

GINIE project

European Communication strategy

Partners:

1. EUROGI
2. OGC Europe
3. JRC European Commission
4. University of Sheffield

Dutch NSDI

- Part of e government proces (authentic registers)
- Space for Geo information program (NSDI innovations)

Policy drivers:

- increasing effective government performance
- Dutch ambition in execution EC Lisbon Agenda (create a knowledge infrastructure)

Synergy GSDI and PCGIAP

- Joint publication GSDI/PCGIAP Spatially Enabled Government initiatives
- Presentation of the results at GSDI conferences
- Cooperation with the Legal and Economic Working Group

Insight in the different SDI legal frameworks in the AP

Legal and Economic Working Group

- Stimulate participation:
 - Data policy issues discussion
 - Creation of awareness for SDI's
- Stimulate research to SDI development
 - Submission of abstracts GSDI Legal/Economic page
<http://www.gsdi.org/lewg/GIIresearch.htm>
 - Invitation offering news of courses
<http://www.gsdi.docs.org/lewg/SDIeducation.htm>
 - Supports Legal and Economic Discussion List since Dec 2004
<http://www.gsdi.org/papermail/legal-eon/>

Synergy GSDI and PCGIAP

- Joint publication GSDI/PCGIAP Spatially Enabled Government initiatives
- Presentation of the results at GSDI 10 and 11 conferences
- Cooperation with the Legal and Economic Working Group
- Cooperation with the GSDI Task Groups on Publishing Best Practices and the GSDI Task Group on Global Surveys on SDI's

Synergy GSDI and PCGIAP

- Opportunities for AP countries to demonstrate synergy at GSDI conferences

Thank you very much:
bas.kok@godi.org