



Spatial Data Infrastructure - Asia and the Pacific Newsletter



SDI-Asia/Pacific Newsletter

October 2007

Vol. 4, No. 10

Spatial Data Infrastructure – Asia and the Pacific (SDI-AP) is a free electronic newsletter for people interested in GIS, remote sensing, and data management issues in Asia and the Pacific. It aims to raise awareness and provide useful information to strengthen national SDI initiatives and support synchronization of regional activities. The Permanent Committee on Geographic Information for Asia and the Pacific ([PCGIAP](#)) is a regional forum that is promoting SDI development. The newsletter is sponsored and prepared by the Global Spatial Data Infrastructure Association ([GSDI](#)) with input from PCGIAP.

To subscribe to SDI-AP, please go to:
<http://www.gsdi.org/newslist/gsdisubscribe.asp>
To unsubscribe, or change your email address, contact:

<http://www.gsdi.org/newslist/gsdisubscribe.asp#existingsubscriber>

Please mention SDI-AP as a source of information in correspondence you may have about items in this issue.

If you have news or information related to GIS, remote sensing, and spatial data infrastructure that you would like to highlight (e.g., workshop announcements, publications, reports, websites of interest, etc.), kindly send us the materials by the 25th of the each month to chan@usgs.gov, sdi-ap@gsdi.org, so that we can include the items in the next newsletter.

PLEASE share this newsletter with colleagues who may find the information useful and suggest that they subscribe themselves.



Back issues of the newsletter are at the GSDI website: <http://www.gsdi.org/newsletters.asp>
Best regards, Changsup Han, Editor, chan@usgs.gov.

Have you signed up for the [GSDI News List](#)? It only takes a minute, and then GSDI can alert you of special news and announcements, and you will be notified when a new issue of the SDI-AP newsletter is available.

The GSDI Association also hosts an [SDI-AP Discussion List](#) with intermittent announcements.

- The [SDI Asia and Pacific Discussion Lists](#) are openly available for anyone to read on the web. To submit comments or to receive submitted comments by e-mail, one must register.
- To see the collection of prior postings to the list, visit the [SDI-AsiaPacific Archives](#).
- To post a message to all the list members, send email to sdi-asiapacific@lists.gsdi.org.

Input to this Issue

Thank you to Kate Lance, ITC (USA/the Netherlands), Per Wilhelm Pedersen (FIG), and Dongsoo Ha (NGIS team leader, Korea Ministry of Construction and Transportation) for their contributions to the issues of this Newsletter.

SDI News, Links, Papers, Presentations

[New Australian Spatial Consortium \(ASC\) announced](#)

The Australian Spatial Consortium (ASC) will consist of the ANZLIC - the Spatial Council, Australian Spatial Industry Business Association (ASIBA), PSMA and the Cooperative Research Centre for Spatial Information (CRCSI). Special Minister of State, Gary Nairn, said, "Whilst research will be an important component of the ASC, the span of activities will be significantly larger and cover the fostering of innovation, product and service development, operational activities, infrastructure development, international activities, and educational support." ... "The ASC offers an integrating factor that was not present before. It will go beyond loose collaboration to something more formal. It is going to add value where the public, private and research/education sectors have to be collectively engaged to deal with the emerging issues of national interest. I believe the work of the consortium will be of great value to government." In addition, a new Spatial



Spatial Data Infrastructure - Asia and the Pacific Newsletter



Information in Local Government Special Interest Group will be formed. It will support the growing demand from GIS analysts and other spatial professionals working in local government across the country.

[Map-based UGC community made by Yahoo Korea goes into China](#)

Yahoo Korea introduced '[Yahoo Lifemap](#)' a map-based UGC community served in Yahoo Gugi, to China. 'Yahoo Lifemap', developed by Yahoo Korea itself, is a new concept of regional service by which users save their own stories and pictures on the map and share them with other users. Yahoo Korea had actively supported technologies, designs, and know-how to open China Lifemap service and finally introduced it to Chinese users on September 12. In particular, Yahoo China arranges the Lifemap service in the main screen of Life Service that provides overall regional information. It also provides regional services to search the information of region, tour, and map, in close contact with other regional services. Yahoo China plans to develop differentiated Life services, which are designed to provide abundant regional information, by building a mega-regional community based on vast regions and users. Yahoo Korea added that it considers a future cooperation for contents through China Lifemap. Yahoo Korea has introduced Yahoo knowledge search to 21 countries and prepared a series of launch for its own mini-dictionary in Taiwan and Hong Kong.

[Spatial Information in Malaysia's 2020 Vision](#)

Malaysia's 2020 vision is on track, but it will require considerable will to keep it there, according to government sources. The vision is an ambitious plan to turn Malaysia into a first world country before 2020. A presentation to the Map Asia Conference in August by Ms Puan Noriyah binti Ahmad was devoted to plans to "move the economy up the value chain". She is the deputy director general of the economic planning unit in the Malaysian Prime Minister's Department. The objective is to improve the material standard of living for the people, while at the same time, improving sustainability and equality. While the speech was long on generalities and short on specifics, it gave some insight into economic thinking in the Malaysian establishment. In most countries, it is easy to find GIS professionals who understand that the root of economic development is sound land policy. But it is not necessarily well understood by accountants and economists, or by other IT professionals. However, in Malaysia, it appears that there is a clear understanding that the proper application of GIS is a key development issue. During her speech, Ahmad mentioned at least two projects that now have serious funding -- a RM250 million planning system for new property development and an RM 298.5 million project to upgrade the cadastre.

[Conference documents for 3rd Ministerial Conference on Space Applications for Sustainable Development in Asia and the Pacific](#), 18-23 October 2007, Kuala Lumpur, Malaysia (in [English](#), [Chinese](#), [French](#), and [Russian](#))

- Review of the implementation of the Regional Space Applications Program for Sustainable Development in Asia and the Pacific
- Information, communication and space technology applications for the achievement of the Millennium Development Goals and the goals of major world summits: trends, challenges and issues
- Draft strategy and action plan on space technology applications for sustainable development in Asia and the Pacific
- Draft ministerial declaration

[First UAE research satellite being built](#)

Dubaisat-1, the UAE's first research satellite, is expected to be used for civilian purposes and contribute to scientific research for local, regional and international entities. Ahmad Obaid Al Mansouri, Director General of the Emirates Institute for Advanced Science and Technology [EIAST], said that the satellite could be used for commercial purposes in the future, adding that more information about the services it will offer will be made at a later stage. "Dubaisat-1 will also help manage natural disasters and promote research and development, space science and other scientific disciplines," he said, adding that the use of advanced technologies will assist in urban and rural development as well as planning for sectors such as utilities and transport. A complementing Graduate Institute for Scientific Research satellite is also expected to be launched in the future, which will initiate specialized educational and training programs. The satellite project consists of three phases over a three-year period. [Source: GIS Development]

[Studentsourcing to map villages in India](#)

The next step after crowdsourcing, using lay citizen to map their own city as done by Google Maps, is a rather more streamlined and better option of studentsourcing which is being used by University of Pune's



Spatial Data Infrastructure - Asia and the Pacific Newsletter



GIS department. More than 200 trained students will map the villages in Pune, Ahmednagar and Nashik districts of Maharashtra state using GPS and GIS. Detailed geographical, historical and socio-economic data of each village will soon be available in digital maps. Non-spatial attribute data and socio-economic profiles of each household is being collected through exhaustive 208 questions ranging from the head of the family, crop cultivated, income generated, health problems and educational status. Such data mapping will help identify location-specific problems and planning infrastructure decisions accordingly, said UoP GIS department head Vrushali Deosthali, who is heading the project and training the students. [Source; GIS Development] See also: [Google uses Crowdsourcing to map cities in India](#) (August 10, 2007).

[Humanitarian information management in Pakistan, six months progress report, recommendations from Pakistan Joint Donor Review](#) (February 2006)

Humanitarian Information Centers (HICs) manage information to support the coordination of response to natural disasters and complex emergencies. As such, they provide a common service to the humanitarian community. Since 1999 13 HICs have been deployed to a variety of humanitarian emergencies¹. It is only in the last 2 years that HICs have been deployed to natural disasters; to Sri Lanka and Indonesia in response to the Indian Ocean earthquake/tsunami and more recently to the South Asia earthquake in Pakistan. The health of each HIC is a reflection of the state of information sharing and management in a specific response. Although understanding the situation on the ground is something that the entire response community requires, as is indicated by the high expectations placed upon the HIC, sufficient priority is not given to develop information management capacity within all organizations responding to the crisis in order to have access to the information required to produce the picture? Similarly, information management has not been addressed in the humanitarian reform agenda. The findings of this review confirm this state of affairs. See also: [Information Management Framework narrative within the Cluster Approach v2.2](#), [Operational Guidance on Responsibilities of Sector Cluster Leads and OCHA in Information Management V1.3](#).

[FOSS: Open Content](#)

This 2007 e-primer from the Asia-Pacific Development Information Program (APDIP) and International Open Source Network (IOSN) introduces the concept of Open Content. It begins by examining the context in which the Open Content movement has emerged within the broader historical context of copyright's relation to the public domain. It discusses how copyright has developed over the past decades, looks at some myths of copyright, and explores how the Open Content movement is reshaping our ideas of creativity and knowledge creation using various case studies. It raises implications for policy makers and the advantages that the Open Content model may offer, especially for developing countries.

[Strategies for preservation of and open access to scientific data in China: summary of a workshop](#)

The USNC/CODATA published a workshop summary report on Strategies for Open Access to and Preservation of Scientific Data in China, Paul F. Uhlir and Julie M. Esanu, eds., freely available online through National Academies Press. The report is based on the results of a major workshop in Beijing. See also: [background information on the Beijing workshop](#)

[GSDI 10: Tenth International Conference for Spatial Data Infrastructure](#)

GSDI 10 invites presentations covering the full range of practice, development and research experiences that advance the practice and theory of spatial data infrastructure development. Submissions relating to the GSDI-10 theme of "Small Island Perspectives on Global Challenges: The Role of Spatial Data in Supporting a Sustainable Future" are particularly attractive.

Among these pressing concerns include:

- sustainable development (e.g. pressures of tourism, preservation and conservation versus land and resource development),
- disaster prevention, warning, management, response, and recovery (e.g. hurricanes, earth quakes, tsunamis, sea level rise)
- alleviation of poverty and crime,
- economic development,
- lessening the digital divide including access to information technologies,
- ensuring food security,
- support of transportation, health and communication systems, and
- facilitating land ownership



Spatial Data Infrastructure - Asia and the Pacific Newsletter



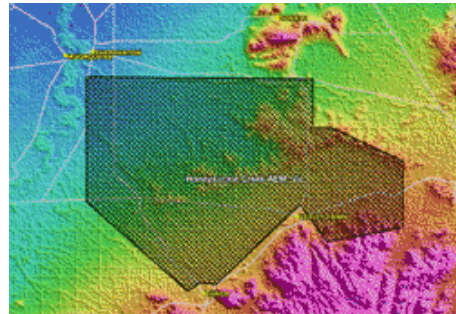
GIS Tools, Software, Data

[The Complete Collection of China Provincial Statistical Yearbooks](#)

The Complete Collection of China Provincial Statistical Yearbooks (2002-) is now available for orders through China Data Center. China Provincial Statistical Yearbook covers comprehensive statistics of each province, which reflects various aspects of the social and economic development at provincial and prefecture levels. The provincial statistical yearbooks offer rich information of each province, including: Division of Administrative Areas and Natural Resources; General Survey; National Accounts; Population; Employment and Wages; Investment in Fixed Assets; Energy; Government Finance; Price Indices; People's Livelihood; General Survey of Cities; Environment Protection; Agriculture; Industry; Construction; Transport, Post and Telecommunication Services; Domestic Trade; Foreign Trade and Economic Cooperation; Tourism; Financial Intermediation; Education, Science and Technology; Culture, Sports and Public Health; and some other Social Indicators. China Provincial Statistical Yearbooks is distributed in CD-ROM. For more information, please visit [China Provincial Statistical Yearbooks](#).

[New airborne geophysical data to aid salinity management](#)

Airborne geophysical survey data from [Billabong Creek](#) in New South Wales and [Honeysuckle Creek](#) in Victoria have been incorporated into the National Airborne Geophysical Database. The data was gathered through a pilot project designed to test the relevance of airborne geophysical data for mapping the distribution of salt-affected land and sub-surface salt. The aim of the project was to map the sub-surface geology to aid in the mapping of groundwater movement and subsequent salt mobilization. Two surveys were conducted to collect airborne electromagnetic data with separate surveys conducted to collect airborne magnetic & radiometric data. The magnetic and radiometric surveys collected 30,862 and 13,770 line kilometers of data for Billabong Creek and Honeysuckle Creek respectively. The electromagnetic surveys collected 5,522 and 6,082 line kilometers of data for Billabong Creek and Honeysuckle Creek respectively. The magnetic and radiometric data is available for free download via [GADDS](#).



[The SIB-ESS-C data catalogue now available online providing full access](#)

In the initial phase of the SIB-ESS-C project data sets and value-added products created within the SIBERIA-II project will be disseminated. A major goal of SIB-ESS-C is to continue product generation in order to build up time series for environmental monitoring and as input parameters for earth science models. During the course of the project the set of products would be extended through production facility and through collaboration.

- SIBERIA-I Forest Cover Map
- SIBERIA-II Continuous Field Land Cover
- SIBERIA-II DEM 100
- SIBERIA-II DEM 500
- SIBERIA-II Duration Thaw/Freeze
- SIBERIA-II Fire Disturbance 1992-2003
- SIBERIA-II Land Cover
- SIBERIA-II Onset Thaw/Freeze
- SIBERIA-II Phenology Budburst
- SIBERIA-II Phenology Senescence
- SIBERIA-II Snow Depth
- SIBERIA-II Snow Melt Date
- SIBERIA-II Water Body Map 2003/2004
- SIBERIA-I Radar Image Map

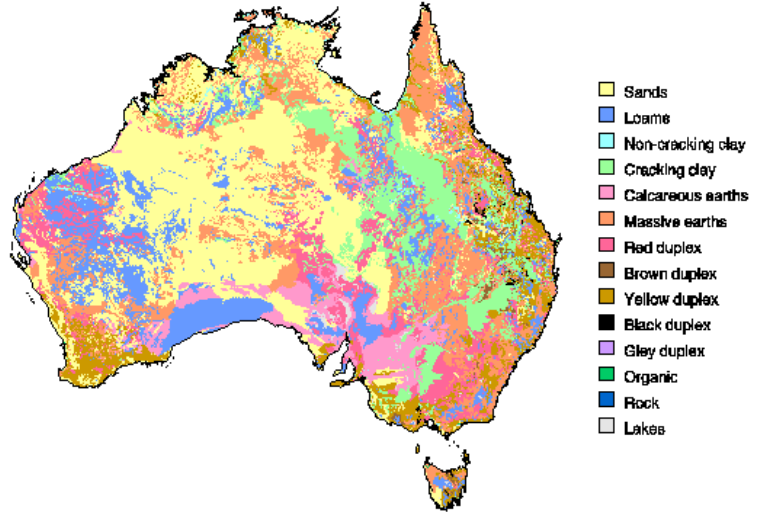


Spatial Data Infrastructure - Asia and the Pacific Newsletter



[Digital Atlas of Australian Soils - Download Metadata](#)

The Digital Atlas of Australian Soils (the Digital Atlas) is a digital version of the set of ten maps, compiled by K H Northcote et al. in 1960-68 and published by CSIRO and Melbourne University Press in Melbourne, known as the 'Atlas of Australian Soils, Sheets 1 to 10, with explanatory data'. The Digital Atlas was created by the National Resource Information Centre (NRIC), now Science Secretariat, within the Bureau of Rural Sciences in 1991 from scanned tracings of the published hardcopy maps. The published hard copy maps were at a scale of 1:2 000 000 although it is known that original compilation work was done at 1:250 000 and 1:500 000 scales. The use of the hardcopies was necessary, as the original printer's separates could not be located. This introduced a source of error due to paper stretch and errors due to drafting accuracy but extensive cross-checking, editing and error tracking were performed to limit the effects of these errors. If required, the 'rms' errors can be supplied.



[Terms and conditions](#)

You may download any or all of the available Data Sets provided you agree to our terms of transfer. To download one or more Data Sets you are required to read the following conditions.

- The data/software provided is for the sole and exclusive use of the authorised individual or agency on a single licence basis.
- Its use is to be acknowledged in any visual or published materials by normal citation.
- It is accepted that the data/software is provided without any offer of technical or other support apart from the accompanying documentation.
- That you or your agency will not provide it to any other individual or agency without the written permission from BRS.
- That it will not be used for direct commercial gain (if in doubt, check with BRS).
- That any errors, omissions or suggestions for improvement should be made known directly to BRS (by e-mail to [Dataman](#) or by mail to the Manager, Data Sets, Science Secretariat, Bureau of Rural Sciences).
- BRS does not accept any responsibility or liability for the outcomes of the use of the data/software.

[Northern Circumpolar Soil Atlas](#)

The JRC Soil Action of the LMNH UNIT IES EC leads a project "Northern Circumpolar Soil Atlas" which has an affiliation with International Polar Year. The Northern Circumpolar Soil Atlas will be the first document of its kind to bringing together soil data for all the northern countries in a style designed to better understand and protect soil resources in these areas. The project will foster cooperation between European Union and several countries (Canada, USA, Russia) and bridge the gap between soil science, policy makers, educators and the general public.

[Shallow-water benthic habitats of American Samoa, Guam, and the Commonwealth of the Northern Mariana Islands](#)

The National Oceanic and Atmospheric Administration (NOAA) National Ocean Service (NOS) initiated a coral reef research program in 1999 to map, assess, inventory, and monitor U.S. coral reef ecosystems, including those in the Pacific. Data, developed in collaboration with U.S. Pacific Territory partners, are available in .zip format for quicker, easier download. The zip files either contain files for a shape file or an image mosaic. [CD's](#), also are available at no cost. Thirty-two distinct benthic habitat types (i.e., four major and 14 detailed geomorphological structure classes; eight major and 18 detailed biological cover types) within eleven zones were mapped directly into a geographic information system (GIS) using visual



Spatial Data Infrastructure - Asia and the Pacific Newsletter



interpretation of orthorectified IKONOS satellite imagery. Benthic features were mapped that covered an area of 263 km². In all, 281 km² of unconsolidated sediment, 122 km² of submerged vegetation, and 82.3 km² of coral reef and colonized hardbottom were mapped.

Geospatial Research, Applications, Reference Material

[Building social safety networks by expanding the use of Global Positioning System in mobile phone](#)

A decisive clue that helped solving a murder case of two women, which has recently made Korean society turbulent, was found in the investigation on the calling list of mobile phones that two victims used. The calling list, which indicates local base stations that cover communication areas, showed moving routes of the victims. However, it is still limited in the aspect of accuracy and open information. Since the advent of LBS (Location Based Service), felonies such as abduction and homicide have been often settled by chasing the location of victims. Privacy policy and inaccurate information, however, have been main obstacles to preventing these felonies. To overcome these obstacles, mobile phone service providers have increasingly installed GPS (Global Positioning System) chip in mobile phones as well as extended the scope of LBS. The government is also moving forward to enact a bill that allows installing an emergency button in mobile phones, which directly connects users to rescue agencies. In this respect, LBS could be the best means to build social safety networks as well as to prevent crimes.

[Map Asia 2007 proceedings available online](#) (14-16 August 2007)

Proceedings include the following presentations:

- [Malaysian Geodetic Infrastructure's Role in Disaster Risk Management and Awareness](#)
- [Suitability Analysis for Seaweed Farming in Tarakan, Indonesia](#)
- [Sustainable Management of Coral Reef Area in Alor Island, Indonesia: A Spatial and Economic Analysis](#)
- [Impediments to developing a local Collaborative Geospatial Data Infrastructure for supporting disaster management in Yogyakarta post 27 May 2006 earthquake disaster](#)
- [Rebuilding Aceh: The Role of Spatial Information](#)
- [Monitoring of Mangroves in Trang Province, South of Thailand by Using Multi-temporal LANDSAT5-TM and SPOT-5 Data](#)
- [Intelligent use and access of geospatial information and data: An improved management using geospatial technology](#)

[Google Australia election website](#)

Gearing up for the federal election due to take place in Australia before the end of the year, a Google Australia election website has been launched to give Australian voters an intimate look at the parties, candidates and election issues. The main product for this initiative is an electorate Mapplet, which identifies which parties hold what seats, who the sitting member is and what margin they currently enjoy. It has a number of interactive features that allow people to analyze the political landscape in depth. And once the election is called, the developers intend to add polling booth locations and even more candidate information. The Mapplet was built with publicly accessible data using Google Pages for hosting and is something any developer could have constructed all of the tools used are available to the public. See also: [Google throws hat into Election 07, gives pollies, voters a voice](#)

[Victoria \(Australia\) mapping program to highlight climate dangers](#)

The stretches of Victoria's coasts most vulnerable to the effects of anticipated global warming are to be identified in an advanced mapping program for the state's 2000 kilometers of shoreline. The State Government expects the two-year program "Future Coasts: Preparing Victoria's Coast for Climate Change" to provide a much better understanding of the risks from rising sea levels and stronger storm surges. A key objective of the study will be to improve planning for developments. The Government estimates the value of the coast at about \$17.6 billion. The project will involve collaboration with the CSIRO to create detailed three-dimensional digital modeling of 10 meters above and below sea level, on a scale the Government says is unprecedented in Australia. It is expected to cost about \$8 million. [Source: TheAge.com.au, August 27, 2007]



Spatial Data Infrastructure - Asia and the Pacific Newsletter



Urban monitoring initiative in India

Union Minister for Science and Technology, Kapil Sibal instructed his staff a year ago to look for a technological solution to the problem of monitoring illegal constructions which led to the development of an artificial intelligence system to detect unauthorized construction in any part of the city. The initiative, a joint venture with the Russian Academy of Science, that will utilize satellite imagery, aerial photography, manual videography, remote sensing, terrain mapping as well as watchdog cameras to detect construction anomalies in the Capital. The cameras are self cleansing and have a range of five kilometers. They can rotate and can operate in all seasons, including the monsoon. Project in-charge and head of the science ministry's research wing Brigadier Shiv Kumar explained further, "Each building in the city will be given a unique ID. We will be able to tell if any construction is taking place or if private buildings have come up on government land and vice versa. We will map all ponds and low lying areas in the city to detect areas that can be potential health hazard to citizens. Water pipes and sewer lines will be fitted with sensors which will help us to immediately detect ruptures or leakages. This system will also complement the GIS method for tasks like assessing property taxes and its collection." The ministry is running trials in a 15-kilometer radius area in Chandni Chowk. Kapil Sibal said, "The technology will be of immense help to planners, whether it is for the town, for water pipes, power lines etc. Delhi will be our pilot project. Once implemented here, we shall reach out to other parts of the country." Sibal will make presentations before Prime Minister Manmohan Singh and Sonia Gandhi next month. The Delhi Government has already sanctioned Rs 100 crore for it, he added. Sibal said such clear database will end any confusion in the implementation of the Masterplan. Municipal records and records of Revenue Department will be compiled into a common database; information will be integrated through specially developed software. He added, among its other benefits, the system can manage traffic, prepare a city in case of impending natural disasters and can monitor environment. He said, "We shall also lend the technology to the Delhi High Court which wants its help to settle property disputes. Later, we shall invite private participation for the actual implementation of the software." [Source: GIS Development] See also: [Illegal construction You are being watched from above](#).

Mapping health facilities in India

The Jansankhya Sthirata Kosh (National Population Stabilization Fund) has undertaken a unique exercise of mapping the existing health facilities in the country right up to the district level. An amalgamation of GIS maps and the Census figures of 2001, the survey gives a picture of each district, its sub-district, prominent towns and urban areas and the distance of each village from the nearest primary health centre. The maps highlight inequities in coverage down to every village to enable resources to be targeted where they are most needed. The GIS mapping and amalgamation of Census data has been completed for the entire country except in the North-Eastern States and Himachal Pradesh due to non-availability of village-level boundary data. [Source: GIS Development]

Training Opportunities

[ISPRS Commission II/4 Training Workshop on Spatial Planning and Decision Support Systems](#), 10-12 November 2007, Kuala Lumpur, Malaysia

The objectives of the workshop are: to provide lectures on the theory, design concept and development of spatial planning support system (SPSS), spatial decision support system (SDSS) and Spatial multi-criteria evaluation (SMCE); provide hands-on exercises on SPSS, SDSS and SMCE; and apply the above concepts in a spatial planning and decision Making exercise. Contact: kfloh03@yahoo.com, shattri@eng.upm.edu.my.

[36th Regional Training Course on Disaster Management \(DMC-36\)](#), 5-23 November 2007, Bangkok, Thailand

The purpose of the course is to provide comprehensive disaster management knowledge and skills to enhance the capabilities of executive managers who have key disaster management responsibilities. It is designed to enable professionals working in disaster management, development and donor agencies to effectively integrate disaster management into their development programs and policies. Participants will be encouraged to develop key skills and adopt proactive attitudes through participation in interactive lectures and reflection on a range of key issues raised during discussions and practical activities. Contact: tedadpc@adpc.net.



Spatial Data Infrastructure - Asia and the Pacific Newsletter



[The User and the GEOSS Architecture - Environment Disaster/Tsunami](#), 14 November 2007, Kuala Lumpur, Malaysia, In conjunction with the Asian Conference on Remote Sensing, Registration: [Form](#).

[Central Asia Workshop on Evaluating Climate Change and Development](#), November 2007, Astana, Kazakhstan

The focus of this workshop will be the Central Asian countries (Azerbaijan, Kazakhstan, Kyrgyz Republic, Tajikistan, Turkmenistan and Uzbekistan). The organizers invite professionals interested in environmental issues, NGOs and civil society from Azerbaijan, Kazakhstan, Kyrgyz Republic, Tajikistan, Turkmenistan and Uzbekistan or with experience in those countries. Participation is limited; 30-40 persons, however, efforts will be made to accommodate most applicants. [Registration](#) is free and can be done online. Contact: Central.Asia@esdevaluation.org, OGomezRodriguez@TheGEF.org.

["AIMS ArcGIS" training course](#), Kabul, Afghanistan

The GIS Training Center at AIMS is responsible for providing GIS training to governmental staff and those UN agencies and NGOs working directly with Afghan governmental departments, where they will be given first priority. The goal of the GIS training center is to enhance the capacity of government staff, making them capable of conducting their own projects using new GIS skills.

- Duration of course is 10 days (14-25 October 07, 4-15 November 07, 2-13 December 07)
- Time of course: 9:00 AM to 12:00 Noon
- Students will receive GIS Certificate for completing the course
- AIMS staff will follow up on students who complete the GIS Training Course

[2007 ScanEx R&D Center's Training Courses](#), Russia

- [Basics of Earth remote sensing data processing – ScanMagic@](#): 6-8 November 2007
- [In-depth remote sensing data processing technology – ScanEx Image Processor@](#): 12-16 November 2007
- [The art of thematic interpretation - ScanEx NeRIS@](#): 19-23 November 2007

Contact: course@scanex.ru

[Asian Institute of Technology \(AIT\) launches UNIGIS program](#)

Bangkok-based Asian Institute of Technology ([AIT](#)) has entered into an agreement with Salzburg University's Centre for Geoinformatics to jointly deliver postgraduate diploma and MSc programs to students across South-East Asia. This [online distance learning program](#) has been inaugurated with an orientation workshop for prospective students and new faculty on September 8th, 2007 and is now accepting applications from interested students. AIT's offering will be closely associated with UNIGIS programs in South Asia. [UNIGIS International](#), is a worldwide consortium of universities offering postgraduate GIScience qualifications via online distance education to a professional audience. AIT is a leading and unique regional multicultural institution of higher learning, offering state-of-the-art education, research and training in technology, management and societal development. [Source: Geoconnexion.com]

[2010 World Program on Population and Housing Censuses: Workshop on Census Cartography and Management](#), 15-19 October 2007, Bangkok, Thailand

The main objective is to highlight the significant additional capabilities of GIS and other geospatial technologies in census mapping activities, including preparation of enumeration, enumeration operations, advanced analysis and dissemination of census data, and how to successfully implement and use these technologies. [Agenda](#), [Information Note](#)

[Upcoming courses of the United Nations Statistical Institute for Asia and the Pacific](#)

Contact: staff@unsiap.or.jp.

- 3rd Regional Course/Workshop on Statistical Quality Management and Fundamental Principles of Official Statistics, 15-19 October 2007, Beijing, China
- 3rd Workshop on Forging Partnerships in Statistical Training in Asia and the Pacific, 20-21 November 2007, Bangkok, Thailand
- Country Course on Small Area Estimation, 10-14 December 2007, Colombo, Sri Lanka



Spatial Data Infrastructure - Asia and the Pacific Newsletter



[Water Resources Research and Management Training Course](#), November 18-20, 2007, Amman-Jordan
Organized by the Royal Scientific Society (RSS) of Jordan and InterAcademy Panel (IAP) on International Issues, the course aims to provide knowledge and develop understanding about the water research and water management in the national, regional and international levels. It provides the skills to assess, plan, execute and implement the actions in water resources research and management. Registration deadline: November 10, 2007. Contact: halasah@rss.gov.jo. [Source: EMWIS website]

[Asia Disaster Preparedness Center \(ADPC\) Training Courses for 2007/8](#), Bangkok, Thailand ([schedule](#))

- ✓ DMC-36 Disaster Management Course, 5-23 November 2007 (3 weeks)
- ✓ GRSDM-2 Use of GIS and RS in DRM, 7-18 April 2008 (2 weeks)
- ✓ CBDRM-17 Community Based Disaster Risk Management, 7-18 July 2008 (2 weeks)
- ✓ FDRM 9 Flood Disaster Risk Management, 6-17 October 2008 (2 weeks)
- ✓ DMC-37 Disaster Management Course, 10-28 November 2008 (3 weeks)
- [National Training Course on Landslide Risk Management under RECLAIM II Project](#), 17-19 October 2007, Baguio City, Philippines
- [Applications of remote sensing and GIS in detecting and monitoring tsunami damage to mangroves and other terrestrial forests and coastal zone resources](#), 22 October - 2 November 2007, Thailand

[FIG Commissions 4 and 5 workshops](#), Christchurch, New Zealand, 29 October – 1 November 2007

This workshop will be included in “[the 9th South-East Asian Survey Congress](#)” to be held on 29 October – 1 November 2007 in Christchurch, New Zealand.

- Much of the work of the surveyor involves the capture of information about the Earth and its resources. Developments in the use of GPS, Terrestrial Laser Scanners and Unmanned Aerial Vehicle (UAV) systems for data acquisition and processing will be reviewed.
- Sustainable Urban Communities
- The use of Geographic Information Systems to support risk management, assist with the analysis of pollutants and the detection of change in wetland and coastal eco-systems will be reviewed.
- 43rd Meeting of the Australasian Hydrographic Surveyors Certification Panel
- 2007 Annual General Meeting of the New Zealand Region of the Australasian Hydrographic Society

[International Workshop: Land Policies, Land Registration and Economic Development, experiences in Central Asian countries](#), Tashkent, Uzbekistan, 31 October - 3 November 2007

This workshop will bring experiences and latest developments together. Invited speakers from Kyrgyzstan, Uzbekistan, Tajikistan, Kazakhstan and other CIS countries will present their views on these developments with a focus on tenure regimes, successes, failures and lessons learned.

- Day 1 & 2: Invited country experience papers from the region and related submitted papers, plenary sessions with discussion time. Working groups will be formed on specific topics.
- Day 3: Excursion to a region and a plenary concluding session on challenges and lessons learned.
- Day 4: Visit to the city of Samarkand and its registration office (optional)

[Online Graduate GIS Certificate, University of West Florida](#)

Starting fall 2006, the University of West Florida will launch an innovative new 100% online program to bring a cutting-edge Geographic Information Science Certificate to students around the country. Laptops will be issued to students for the entire one-year duration of the certificate program. Each laptop will be pre-loaded with state-of-the-art GIS and Remote Sensing software to conduct hands-on analysis. Students will participate in online courses with instructors who are highly qualified in their field. Upon completion of the program, students will receive a University of West Florida Certificate in Geographic Information Science, and earn 24 undergraduate semester credit hours of college credit. Students with a bachelor's degree can earn up to 12 hours of graduate credit and receive a graduate certificate in GIS. The certificate can be used to help fulfill a student's educational requirement when applying for their GISP certification. Courses will transfer into several UWF undergraduate and graduate programs. Contact: Stu Hamilton, gis@uwf.edu.

[Workshop on Harmonization of Forest and Land Cover Classifications using LCCS for Central Asia Region](#), Ankara, Turkey, 26-30 November 2007

Training will be provided in the use of the Land Cover Classification System (LCCS) and other geo-information technologies, which can be used on national and regional projects. The workshop will also be



Spatial Data Infrastructure - Asia and the Pacific Newsletter



used to initiate regional collaboration and GLCN projects. The workshop is intended for officials from national institutes involved in land cover mapping from the following countries: Afghanistan, Armenia, Azerbaijan, Georgia, Kazakhstan, Kyrgyzstan, Pakistan, Tadjikistan, Turkmenistan, Turkey and Uzbekistan. This harmonization workshop is organized by FAO-Environment and Natural Resources Unit (NRCE) as activity of the Global Land Cover Network project, with the technical support of the United Nations Environment Program (UNEP). [Apply online](#) to participate. FAO/UNEP have launched the Global Land Cover Network (GLCN) with the objective to improve the availability of global information on land cover and its dynamics, harmonizing land cover mapping and monitoring at national, regional and global levels. GLCN will generate essential data needed for sustainable development, environmental protection, food security and humanitarian programs of the United Nations, and of other international and national institutions.

Funding Opportunities, Awards, Support

[KAAD-AIT Scholarship Program](#)

The KAAD, by its German name in full known as Katholischer Akademischer Auslander-Dienst (the Catholic Academic Support Service for Foreign Students, Germany) has, since long, provided scholarships for young professionals in need of such support from countries around the world. Based on the agreement between the KAAD and Asian Institute of Technology (AIT), the two organizations jointly provide scholarship support for qualified applicants from Cambodia, Laos, Myanmar, Timor Leste and Vietnam, to pursue master's or doctoral degree program studies at the AIT. Interested persons may apply to any Fields of Study offered by the AIT. In exceptional cases, applicants from Thailand may be considered. Interested applicants will obtain the AIT application form from the AIT Admissions and Scholarships Unit, P.O. Box 4, Klong Luang, Pathumthani 12120, Thailand. The AIT application form can be downloaded from the [AIT Admissions Homepage](#). Communications can also be sent using email addressed to admissions@ait.ac.th. Applicants must submit, together with the application form, a short letter indicating that they apply for a KAAD-AIT scholarship. Applications for all master's as well as doctoral degree programs for the regular August intake must reach the AIT Admissions and Scholarships Unit by the 15th of December of the preceding year. For the January intake, applications must reach AIT by the 15th of June of the preceding year.

[Postgraduate Research Scholarship Program](#), Antarctica New Zealand

The Postgraduate Research Scholarship Program is designed to encourage researchers to pursue interests in Antarctica and the Southern Ocean. Besides Antarctica New Zealand, New Zealand Post, Kelly Tarlton's Antarctic Encounter and Underwater World and Helicopters New Zealand are generously supporting this scholarship program. Three scholarships are offered annually. For the 2008/2009 season, these are:

- New Zealand Post Antarctic Scholarship: For research in the 08/09 season Award of \$10,000 plus logistics support in Antarctica.
- Kelly Tarlton's Antarctic Scholarship: For research in the 08/09 season Award of \$10,000 plus logistics support in Antarctica.
- Helicopters New Zealand Doctoral Scholarship: For Doctoral research in the 08/09 and 09/10 seasons Award of \$20,000 per annum (total of \$40,000) plus logistics support in Antarctica.
- Sir Robin Irvine Doctoral Scholarship: For Doctoral research in the 07/08 and 08/09 seasons Award of \$20,000 per annum (total of \$40,000) plus logistics support in Antarctica.

The scholarship award is expected to contribute to research costs, travel, fees and living expenses incurred during the scholarship period. Application deadline: 7 March 2008. Contact: [Shulamit Gordon](#)

[Google 'Build Your Campus Competition' for Australia and New Zealand](#)

If you're a college or university student in either country, this is an opportunity to put your university in the virtual 3D world. You'll need to model your campus buildings in Google SketchUp, geo-reference them in Google Earth, and submit them through the SketchUp competition website. The winning teams will earn "eternal online glory" and an all-expenses-paid visit to Google's office in Sydney. To enter the competition, you must be a college or university student in Australia or New Zealand, and you must be at least 18 years old. You can take on the project yourself or enlist the help of your classmates, and to do your best possible work, Google suggest that you have a faculty advisor. Deadline for entries: October 31, 2007.



Spatial Data Infrastructure - Asia and the Pacific Newsletter



[Ecosystem Grants Program \(EGP\) of IUCN Netherlands](#)

The Ecosystem Grants Program (EGP) of IUCN NL funds projects of local organizations in the South that link ecosystem conservation and poverty issues.

- Only NGOs can submit proposals
- Proposals have to contribute to the overall goal of EGP: The sustainable use and conservation of ecosystems.
- The deadline for pre-proposals from Southeast Asia (Indonesia, Malaysia, Philippines, PNG) is 1 March 2008.
- ALL pre-proposals and proposals MUST use [EGP-formats](#) to be considered for funding
- Maximum grant award is Euro 85,000
- (Pre-)proposals must comply with [administrative and general criteria](#)

[Rothamsted International Fellowship Scheme](#)

The scheme was initiated in 1993 to commemorate the 150th anniversary of the founding of [Rothamsted Research](#), which is the World's oldest agricultural research station. The Fellowship scheme is managed by Rothamsted International and enables scientists from developing and less developed countries to carry out research projects for 6 to 12 months in collaboration with partner scientists at Rothamsted Research. Applications have to be completed and submitted by a suitable Project leader at Rothamsted Research who must have had previous contact with the named applicant. Contact: rothamsted.international@bbsrc.ac.uk, Deadlines for Applications: 5 October 2007

[NOAA International Coral Reef Grants](#)

The NOAA International Coral Reef Conservation Grant Program provides matching grants of financial assistance for international coral reef conservation projects. Eligible applicants include all international, governmental (except U.S. federal agencies), and non-governmental organizations. The Program solicits proposals under four funding categories:

- Promote Watershed Management in the Wider Caribbean, Brazil, and Bermuda;
- Regional Enhancement of Marine Protected Area Management Effectiveness;
- Encourage the Development of National Networks of Marine Protected Areas in the Wider Caribbean, Bermuda, Brazil, Southeast Asia, and the South Pacific; and
- Promote Regional Socio-Economic Training and Monitoring in Coral Reef Management in the Wider Caribbean, Brazil, Bermuda, the Western Indian Ocean, the Red Sea, the South Pacific, South Asia, and Southeast Asia.

Each funding category has specific applicant and project eligibility criteria. Pre-applications must be received by NOAA by 11:59 p.m., U.S. Eastern Time, on November 6, 2007. Eligible applicants include all international, governmental (except U.S. federal agencies), and non-governmental organizations. For specific country eligibility per category, please refer to individual category descriptions in Section V. of the Federal Funding Opportunity. The proposed work must be conducted at a non-U.S. site. Contact: international.coral.grants@noaa.gov.

[East Asia and Pacific Summer Institutes for U.S. Graduate Students \(EAPSI\)](#)

The East Asia and Pacific Summer Institutes provide U.S. graduate students in science and engineering: 1) first-hand research experience in Australia, China, Japan, Korea, New Zealand or Taiwan; 2) an introduction to the science and science policy infrastructure of the respective location; and 3) orientation to the society, culture and language. The primary goals of EAPSI are to introduce students to East Asia and Pacific science and engineering in the context of a research laboratory, and to initiate personal relationships that will better enable them to collaborate with foreign counterparts in the future. The institutes last approximately eight weeks from June to August. Full proposal deadline: December 11, 2007.

Employment Opportunities

[Spatial Maintenance Officers](#), Newcastle, Australia

Newcastle based government client is seeking a number of Spatial Maintenance officers for an ongoing project. The Role would be most suited to University graduates with qualifications in GIS that also have good analytical skills for investigating land status. Alternatively, candidates with sound business knowledge of land



Spatial Data Infrastructure - Asia and the Pacific Newsletter



titling and status may be suited to this position provided they have had some exposure to GIS or Land Information systems. Job Starting Date: November 1, 2007, Contact: Dean Howell, jobs@GISjobs.com.au

GIS Specialist, New South Wales – Sydney, Australia

EDAW is involved in some of the most interesting and significant projects in the current Australian market; including the Western Sydney Parklands, Eskinneville urban design study, Brisbane's North South Bypass tunnel and a variety of visual impact assessments for major road works, train lines and wind farms; with continued growth on the horizon are looking to extend our thriving team with the addition of a talented GIS Specialist based in the Sydney studio. This newly created position will play a key role in supporting a range of projects including broad scale planning and site assessment, urban and landscape design and environmental assessment. The focus will be on the creative application of GIS technology maximising the use of the suite of ESRI ArcGIS extensions. In addition to this you will be responsible for achieving robust analysis, high quality cartography, effective visualisation, and integration between GIS and other core software applications including AutoCAD, 3D Max, Sketchup, the Adobe Creative Suite, and Macromedia Flash. Application : always, Contact: recruit@edaw.com.au

PhD Scholarship in Climate Change, Townsville, Australia

The ARC Centre of Excellence for Coral Reef Studies at James Cook University in collaboration with Sustainable Tourism CRC offers a Joint PhD scholarship in the following topic:

- Assess the environmental monitoring by tour operators of the impacts of climate change on coral reefs, such as coral bleaching, changes to marine fauna and crown of thorns starfish outbreaks.
- Identify what operators and government can do to slow or reduce the consequences of climate change on their operations.

Contact: Terry Hughes, Terry.Hughes@jcu.edu.au, Closing date: 31 October 2007

Senior / Project Leader, Woodlands, Singapore

- Lead an international project team
- Provide leadership in design, manufacturability and reviews
- Provide cost estimates and time lines based on discussions with key departmental personnel and stake holders
- BS or MS degree or equivalent, preferred computer science or electronics
- Design experience in product development. Experience in product launch and product life cycle is a bonus, Professional education in project management (e.g. PMI or equivalent degree)
- Experience in leading development teams (successfully led 2-3 technical projects)

Closing date: No description, [Apply Online!](#)

Director of Forests and Governance Program, Bogor, Indonesia

CIFOR is looking for creative and visionary Director of Forests and Governance Program. The Director will lead research on how society can make more informed and democratic decisions that support sustainable forests and livelihoods. The multidisciplinary program currently includes research on decentralization and devolution, forest finance and law enforcement, and collaborative forest management. In the future, the program will also contribute to Center-level initiatives emerging from CIFOR's new strategy, including one on climate change and forests. This position reports to the Director General and is a member of the Management Team. The ideal candidate will have a PhD in a relevant field and a minimum of 10 years professional experience including research management and field experience. Applications will be accepted until the position is filled. Interviews will be held in Bogor, Indonesia and is tentatively scheduled at the end of October or early November. Contact: cifor-hr@cgiar.org

Senior Scientist (biodiversity inventory), Sumatra, Indonesia

A Senior Scientist is required for 3 years to act as a counterpart to the Head of Research and Conservation, (HRC)) for the Harapan Rainforest in Indonesia. The scientist will work with local partners and manage a survey team to conduct a biodiversity inventory of the forest, and will work with the HRC to develop a research strategy and a sustainable monitoring system. This post is funded by the Darwin Initiative, and the postholder will be jointly responsible with the HRC for managing and reporting on the Darwin project. It is expected that the Senior Scientist will play a major mentoring role for the counterpart and immediate subordinates. Special skills in ecology, particularly in tropical forests, statistical analysis, computing, technical writing, etc., and the flexibility to acquire skills in new areas. Experience of managing teams and



Spatial Data Infrastructure - Asia and the Pacific Newsletter



running complex projects. A PhD or equivalent experience is essential, as is a proven ability to carry through research programs from conception to completion. This post will be based on-site in Sumatra with external travel from there as required. This post requires a considerable amount of diplomacy and cultural awareness. The ability to speak Indonesian, or an aptitude and willingness to learn basic Indonesian are essential. Deadline: 18 October 2007.

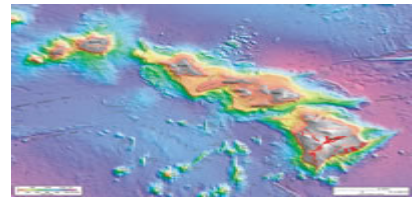
Other

[India Land Policies for Growth and Poverty Reduction \(World Bank, July 2007\)](#)

In India, land continues to be of enormous economic, social, and symbolic relevance. The main purpose of this report is to review new empirical evidence on land administration and land policy, as well as the possible interaction between the two, to derive policy conclusions. The empirical basis for the discussion of land administration is provided by a review of land records, survey and settlement, and land registration in 14 states.

[Mapping Underwater Volcanoes Near Hawaii](#)

This is a website to track the 28-day marine expedition that will map the Kaua'i and Ni'ihau submarine volcanic fields. In addition to mapping, researchers on this trip will study the petrology, geochemistry and ages of the lava flows. The project began on September 9th and there is a good log of information and images up already.



[China approves five-year plan for environment protection](#)

China's State Council has approved in principle a five-year environmental protection plan that sets out guidelines, major tasks and measures for the government to tackle pollution. The plan, approved during an executive meeting presided over by Premier Wen Jiabao, has put "pollution control and prevention" as its focus with the aim of achieving the environmental protection targets set by the government last year. The government set goals in its five-year plan to reduce energy consumption per unit of gross domestic product (GDP) by 20 percent and major pollutant discharges by 10 percent in the 11th five-year plan period ending 2010. "China is suffering from increasing conflicts between economic and social development and constraints in resources and energy," the State Council said in a circular. The tasks laid out included:

- Accelerating economic restructuring to create an industrial system that will aid resource conservation and environmental protection, along with the control of inappropriate development activities. "Techniques, facilities and backward production measures that lead to too much waste of resources and serious pollution must be eliminated," the circular said.
- Improving supervision, management and law enforcement of pollution.
- Advancing environmental science and technology through innovation to improve environmental protection capability.
- Enhancing cooperation between government departments and local governments to better resolve trans-regional environmental problems.
- Reinforcing environment education to enhance the public's awareness of eco-system protection.

[Regional decline of coral cover in the Indo-Pacific: timing, extent, and subregional comparisons](#)

A number of factors have recently caused mass coral mortality events in all of the world's tropical oceans. However, little is known about the timing, rate or spatial variability of the loss of reef-building corals, especially in the Indo-Pacific, which contains 75% of the world's coral reefs. The authors of this study compiled and analyzed a coral cover database of 6001 quantitative surveys of 2667 Indo-Pacific coral reefs performed between 1968 and 2004. The rate and extent of coral loss in the Indo-Pacific are greater than expected. Coral cover was also surprisingly uniform among subregions and declined decades earlier than previously assumed, even on some of the Pacific's most intensely managed reefs. These results have significant implications for policy makers and resource managers as they search for successful models to reverse coral loss. [Source: IISD Linkages Update]



Spatial Data Infrastructure - Asia and the Pacific Newsletter



Items newly added to this listing of events since the last SDI-AP issue are marked *** NEW ***

Conferences, Events

Date	Location	Event
October 2007		
1-2 October	Palisades, NY, USA	Global Roads Workshop: Developing Useable Data for Tomorrow's Needs , The workshop is by invitation only; interested individuals may contact Alex de Sherbinin at Adesherbinin (a) ciesin.columbia.edu.
1-3 October	Mandaluyong, Philippines	International Conference on the Millennium Development Goals Statistics (ICMDGS)
1-3 October	Geneva (Carouge), Switzerland	ISGI 2007 2nd International CODATA Symposium on Generalization of Information , Contact: Horst Kremers, office@Horst-Kremers.de
2-5 October	Quebec City, Canada	GeoCongress Quebec 2007 Histoire de voir le monde and General Assembly of the Federation des Geometres Francophones
6-10 October	Istanbul, Izmir, Ankara, Turkey	12th International IEFT Fall 2007 , Contact: Daniz Akar, info@ieft.net
7-12 October	Christchurch, New Zealand	NZIS/South East Asian Survey Conference (SEASC) / CASLE Conference Contact: email: nzis@surveyors.org.nz
8-10 October	Santander, Spain	CoastGIS 2007 , Contact: garrigamc@unican.es
14-15 October	Alabama, USA	The Rocket City Geospatial Conference
14-16 October	Beijing, China	International Conference on Research and Practical Issues of Enterprise Information Systems (IFIP TC8) , Contact: ssfqjy@263.net .
14-20 October	Australia	2007 Earth Science Week celebrations , Contact: Fiona Wright
15-17 October	Sydney, Australia	ESRI Australia's 21st National Client Conference (OZRI 2007)
15-17 October * NEW *	Huntsville, AL, USA	Rocket City Geospatial Conference 2007
16-18 October	Chiang Mai, Thailand	The Future of Forests in Asia and the Pacific: Outlook for 2020 , Contact: patrick.durst@fao.org .
16-19 October	Dongying City, China	3rd International Yellow River Forum (IYRF) Sustainable Water Resources Management and Delta Ecosystem Maintenance, Abstract deadline: <u>October 31, 2006</u> . Contact: iyrf@yellowriver.gov.cn .
17-19 October * NEW *	Khon Kaen, Thailand	Regional Workshop on Innovative Approaches to Flood Risk Reduction in the Mekong Basin
18-23 October	Kuala Lumpur, Malaysia	3rd Ministerial Conference on Space Applications for Sustainable Development in Asia and the Pacific
22-24 October	Beijing, China	4th International Conference on Agriculture Statistics (ICAS-4) World Bank Fund Application for this Conference , Contact: icas4@stats.gov.cn . Abstracts deadline: extended to 30 April 2007.
22-26 October	Alotau, Papua New Guinea	8th Pacific Islands Conference on Nature Conservation and Protected Areas
22-26 October	Kocaeli, Turkey	International Earthquake Symposium Kocaeli 2007 , Contact: ertanpeksen@kou.edu.tr
23 October	Daegu, South Korea	9th International Cooperative Seminar between KAGIS and GISA
25 October	Queensland Australia	Cadastral Reinstatement Workshop



Spatial Data Infrastructure - Asia and the Pacific Newsletter



28 – 31 October	Jeju, Korea	2nd United Cities and Local Governments Congress (UCLG) World Congress
28 October – 1 November	Perth, Western Australia	2nd IWA – ASPIRE , Contact: aspire@awa.asn.au
28 October – 2 November	Rajasthan, India	12th World Lakes Conference Contact: dalwani@taal2007.org , info@taal2007.org
29 October	Ottawa, Ontario	Great Lakes Regional Data Exchange 2007: Sharing Common Resources
29 – 30 October	Chiba City, Japan	13rd CEReS International Symposium on Remote Sensing Theme: Disaster Monitoring and Mitigation in Asia. Poster registration deadline: 15 September 2007.
29 October - 1 November	Christchurch, New Zealand	9th South-East Asian Survey Congress
29-31 October	Muscat, Oman	2007 ESRI Middle East & North Africa Users Conference Register online prior to October 4, 2007
29-31 October	Rome, Italy	7th SMOS workshop , Contact: yann.kerr@cesbio.cnes.fr
29 October - 2 November	Beijing, China	Forum 11: Equitable Access: Research challenges for health in developing countries , Contact: info@globalforumhealth.org .
31 October - 3 November * NEW *	Tashkent, Uzbekistan	International Workshop: Land Policies, Land Registration and Economic Development, Experiences in Central Asian countries , Co-sponsored by FIG,
November 2007		
2-3 November	Gold Coast, Australia	International Map Trade Association (IMTA) (Asia Pacific) Annual Conference & Trade Show , Presentation application deadline: June 29, 2007.
2-5 November	Beijing, China	Addressing Threats to Human & Environmental Health in the Pacific Basin
5-7 November	Johor Bahru, Malaysia,	Joint International Symposium and Exhibition on Geoinformation 2007 & International Symposium on GPS/GNSS 2007 , Contact: Dr. Md. Nor Kamaruddin, md.nor@fksq.utm.my
5-9 November	Auckland, New Zealand	1st International Workshop on Semantic and Conceptual Issues in Geographic Information Systems (SeCoGIS 2007)
6-8 November	Kuala Lumpur, Malaysia	International Symposium & Exhibition on Geoinformation/Global Navigation Satellite System (ISG/GNSS 2007) Contact: Dr. Md. Nor Kamaruddin, md.nor@fksq.utm.my , Deadline for abstracts: 30 April 2007
8-10 November	Hong Kong SAR, China	4th International Symposium on LBS and TeleCartography . Organised by Department of Land Surveying and Geoinformatics of the Hong Kong Polytechnic University and the Vienna University of Technology and co-sponsored by ICA and IAG commissions.
10-12 November	Kuala Lumpur, Malaysia	Workshop on Spatial Planning and Decision Support Systems Contact: kfloh03@yahoo.com , shattri@eng.upm.edu.my .
12-15 November	San Jose, Costa Rica	6th FIG Regional Conference
12-15 November * NEW *	Yokohama, Japan	The 7th Meeting of the Asia Forest Partnership (AFP7)
12-16 November	Kuala Lumpur, Malaysia	28th Asian Conference on Remote Sensing (ACRS 2007) , Abstract deadline: <u>July 16, 2007</u> . Contact: acrs2007@macres.gov.my .
15-17 November	Riyadh, Saudi Arabia	WG VII/7 Workshop , Contact: Sultan Al Sultan, rsensing_2004@yahoo.com
19-23 November	Kyoto, Japan	1st Joint International ALOS Data Nodes PI Symposium



Spatial Data Infrastructure - Asia and the Pacific Newsletter



20-21 November	Sintok, Malaysia	Rural ICT Development Conference 2007 (RICTD '07) , Paper deadline: 15 September 2007.
20-22 November	Shanghai, China	CHINA GEO-TECH 2007 , Contact: togetherbjo@together-expo.com
20-23 November	Kuala Lumpur, Malaysia	WG I/6 Workshop on Earth Observation Small Satellites for Remote Sensing Applications Contact: Mazlan Hashim, mazlan@fksg.utm.my
21-23 November	Bangalore, India	14th Session of the Asia-Pacific Regional Space Agency Forum (APRSAF-14)
21-23 November * NEW *	Amsterdam, Netherlands	2nd Dutch GIN Congress in Geomatics
21-24 November	Cairns, Australia	Hydro 2007 & Trade Exhibition - Focus on Asia: Meeting the Interface Challenges of the Littoral Zone. Ocean Mapping Group – Multibeam Echosounder Course, Contacts: john.maschke@hydro.gov.au
22 November	Quezon City, Philippines	Philippine National Conference on Geographical Studies 2007 Contact: pamela.crosby@up.edu.ph .
25-30 November * NEW *	Perth, Western Australia	ESA 2007 Conference - Adapting to Change
26-28 November * NEW *	Lattakia, Syria	2007 International Arab Conference on Information Technology (ACIT'2007) , Paper deadline extended to July 30, 2007.
26-29 November	Burwood, Australia	Asia-Pacific EcoHealth Conference: Sustaining People and Places in a Changing World , Abstract deadline: August 14, 2007. Contact: marika.thomson@deakin.edu.au .
26-30 November	Singapore	Energex2007
27-29 November	Taipei, Taiwan	2007 Conference on Urban Disaster Reduction: Large Scale Disaster Management
27-29 November	Perth, Australia	ESA 2007 Annual Conference
28-30 November	Bangkok, Thailand	8th United Nations Geospatial Information WorkingGroup (UNGIWG) Plenary
28-30 November	Singapore	ESRI South Asia User Conference
29-30 November	Colombo, Sri Lanka	Annual Symposium on Poverty Research in Sri Lanka Abstract deadline: July 31, 2007.
29-30 November	Berlin, Germany	CODATA International Symposium on LandCover Logic , Contact: office@Horst-Kremers.de
29-30 November	Mexico City, Mexico	Second International Conference on Geospatial Semantics (GeoS 2007) , Paper deadline: June 15, 2007.
30 November-3 December	Melbourne, Australia	Asia Pacific EcoHealth Conference , Ecology and Health: People & Places in a Changing World
December 2007		
2-4 December	Muscat, Oman	4th International Conference on Wadi Hydrology , Abstract deadline: 30 June 2007.
3-5 December	Guangzhou, China	United Nations/China Regional UN-SPIDER Workshop , Organized by UNOOSA and the Chinese National Space Administration (CNSA) and with the support of the Government of China.
3-5 December	Guangzhou, China	6th International Workshop on Digital Watermarking , Contact: ist@mail.sysu.edu.cn .
3-6 December	Melbourne, Australia	3rd International Conference on Intelligent Sensors, Sensor Networks and Information Processing (ISSNIP) 2007 , Abstract deadline: July 31, 2007.



Spatial Data Infrastructure - Asia and the Pacific Newsletter



3-14 December * NEW *	Bali, Indonesia	United Nations Framework Convention on Climate Change Conference of Parties
4-6 December	Moscow, Russia	3rd International conference "Earth from space - The Most Effective Solutions" Contact: conference@scanex.ru . Abstract deadline: <u>September 20, 2007</u> .
4-7 December	Suva, Fiji	Pacific Islands GIS/RS Conference , Abstract deadline: <u>November 9, 2007</u> .
6-7 December	Moscow, Russia	7th International Conference on Laser Scanning
10-12 December	Bahrain	2007 Middle East Spatial Technology Conference & Exhibition , Abstract deadline: <u>28 February 2007</u> .
10-13 December	Macao SAR, China	International Conference on Theory and Practice of Electronic Governance , Abstract deadline: <u>16 July 2007</u> .
10-13 December * NEW *	Hanoi, Vietnam	10th International Conference on Asian Digital Libraries (ICADL 2007) , Contact: icadl2007@ntu.edu.sg .
12-14 December	Delft, Netherlands	3D Geoinfo07. 2nd International Workshop on 3D Geo-Information : Requirements, Acquisition, Modeling, Analysis, Visualization. Contact: 3Dgeoinfo07@tudelft.nl
17-19 December	Trivandrum, India	Trans Asiatic GIS Society Conference on GIS "b-GIS@Asia" , Contact: bgisasia.info@tagsasia.org
20-22 December	Bangkok, Thailand	International Conference on Computer, Information, and Systems Science, and Engineering (CISE 2007) , Paper submission deadline: <u>September 15, 2007</u> .
21-23 December	Bangkok, Thailand	2nd International Conference on Health GIS , Papers can be accepted for oral presentation only if at least one of the authors has registered by October 30, 2007. Contact: healthgis07@gmail.com .
January 2008		
January	Valencia, Spain	Commission 3 Annual Meeting and Workshop "Spatial Information in Environmental Management" , Organized by FIG Commission 3
6-7 January	Tehran, Iran	4th GIS86 Conference & ISPRS Workshop on Geoinformation and Decision Support Systems , Abstract deadline: <u>15 September 2007</u> . Contact: gis86sdss@ncc.neda.net.ir .
7-8 January	Hong Kong	Virtual Geographic Environments - An International Conference on Developments in Visualization and Virtual Environments in Geographic Information Science , Abstract deadline: <u>July 31, 2007</u> .
12-15 January	Jinju, Korea	6th International Symposium on City Planning and Urban Management in Asian Countries , Deadline date of abstract: <u>15 April 2007</u> .
17-18 January	Tokyo, Japan	ESRI Asia Pacific User Conference
22-24 January	New Delhi, India	Map India
February 2008		
5-8 February	Sydney, Australia	Global Workshop on High Resolution Digital Soil Sensing & Mapping , Contact: viscarra-rossel@usyd.edu.au .
6-8 February	New Delhi, India	Map India 2008 , Contact: info@mapindia.org
7-9 February	New Delhi, India	Delhi Sustainable Development Summit (DSDS) 2008 , Theme: Sustainable Development and Climate Change, Contact: dsds@teri.res.in .
17-20 February * NEW *	Dead-Sea, Jordan	RecShow '08, Middle East Recycling, Waste & Environmental Management Exhibition & Congress



Spatial Data Infrastructure - Asia and the Pacific Newsletter



25-29 February	St. Augustine, Trinidad	GSDI 10: Tenth International Conference for Spatial Data Infrastructure , Call for workshop: <u>1 June 2007</u> , Call for paper: <u>15 September 2007</u> .
26-29 February	Phitsanulok, Thailand	IEEE-DEST 2008 - 2nd IEEE International Conference on Digital Ecosystems and Technologies , Paper deadline: <u>30 September 2007</u> .
March 2008		
3-5 March	Manama, Bahrain	GEO 2008 - 8th Middle East Geoscience Conference and Exhibition , Abstract deadline extended to <u>4 July 2007</u> . Contact: ppryor@aapg.org .
3-7 March * NEW *	Kathmandu, Nepal	International Conference on Rivers in the Hindu Kush Himalaya: Ecology and Environmental Assessment
12-14 March	Perth, Western Australia	WALIS International Forum 2008 - Management of Geographic Information , Contact: David Lee Steere, davidls@walis.wa.gov.au . Abstract deadline: <u>28 September 2007</u> .
April 2008		
8-10 April	Dubai, UAE	Map Middle East 2008 , Contact: info@mapmiddleeast.org
May 2008		
10-14 May	Lisbon, Portugal	13th FIG Symposium on Deformation Measurements and Analysis (WG 6.1) with the 4th IAG Symposium on Seodesy for Geotechnical and Structural Engineering (SC 4.2) – Measuring the Change
June 2008		
14-19 June	Stockholm, Sweden	FIG XXXI General Assembly and Working Week Contact: FIG Office, fig@fig.net .
30 June-4 July	Xian, China	10th International Symposium on Landslides and Engineered Slopes
July 2008		
1-5 July	Beijing, China	Spatial Accuracy 2008 Contact: accuracy2008@spatial-accuracy.org .
3-11 July	Beijing, China	XXI ISPRS Congress Contact: Chen Jun, congressdirector@isprs2008-beijing.org .
3-11 July	Beijing, China	4th International Symposium on Geospatial Information for Disaster Management (Gi4DM 2008) , Contact: Sisi Zlatanova, s.zlatanova@otb.tudelft.nl .
August 2008		
5-15 August	Oslo, Norway	33rd International Geological Congress (IGC)
September 2008		
1-4 September	Montpellier, France	13th World Water Congress , Theme: Global Changes and Water Resources: Confronting the Expanding and Diversifying Pressures. Contact: wwc2008@msem.univ-montp2.fr .
8-11 September * UPDATED *	Kathmandu, Nepal	The Tenth International Symposium on High Mountain Remote Sensing Cartography , Deadline for submission of abstracts: February 1, 2008, Contact: pmool@icimod.org .
29 September-3 October	Darwin, Australia	14th Australasian Remote Sensing & Photogrammetry Conference (ARSPC)
October 2008		
5-8 October	Kyiv, Ukraine	21st International CODATA Conference , Scientific Information for Society - from Today to the Future. Contact: codata@codata08.org.ua .
5-14 October	Barcelona, Spain	World Conservation Congress , Contact: congress@iucn.org .



Spatial Data Infrastructure - Asia and the Pacific Newsletter



13-17 October	Nanjing, China	4th World Urban Forum , Organized by UN-Habitat.
December 2008		
2-4 December * NEW *	Shanghai, China	GEO Expo China , Contact: sales@chinageo-expo.com
March 2009		
15-22 March	Istanbul, Turkey	5th World Water Forum , Contact: m.giard@worldwatercouncil.org .
May 2009		
3-8 May	Eilat, Israel	FIG Working Week and XXXII General Assembly – New Horizons across the Red Sea – Surveyors Key Role in Accelerated Development , Contact: fig@fig.net
June 2009		
15-19 June	Rotterdam, The Netherlands	11th International Conference on Global Spatial Data Infrastructure (GSDI 11)
August 2009		
2-15 August	Rio de Janeiro, Brazil	XXVII General Assembly of the International Astronomical Union
April 2010		
9-16 April	Sydney, Australia	International Federation of Surveyors (FIG) 2010 , Contact: info@isaust.org.au
April/May 2010		
April/May	Marrakech, Morocco	FIG Working Week and General Assembly
May 2010		
May	Hong Kong	FIG Working Week 2012

To subscribe to SDI-AP, please do so online at:

<http://www.gsd.org/newslist/gsdsubscribe.asp>

To unsubscribe, or change your email address, contact:

<http://www.gsd.org/newslist/gsdsubscribe.asp#existingsubscriber>

Changsup Han, Editor, chan@usgs.gov, sdi-ap@gsdi.org.

Global Spatial Data Infrastructure Association

<http://www.gsd.org>

DISCLAIMER

The Editor and Web Host will not be held liable for any errors, mistakes, misprints or incorrect information.

Copyright © 2007. All rights reserved.