



# Spatial Data Infrastructure - Asia and the Pacific Newsletter



Spatial Data Infrastructure – Asia and the Pacific (SDI-AP) is a free electronic newsletter for people interested in GIS, remote sensing, and data management issues in Asia and the Pacific. It aims to raise awareness and provide useful information to strengthen national SDI initiatives and support synchronization of regional activities. The Permanent Committee on Geographic Information for Asia and the Pacific (PCGIAP) is a regional forum that is promoting SDI development. The newsletter is sponsored and prepared by the Global Spatial Data Infrastructure Association (GSDI) with input from PCGIAP.

To subscribe to SDI-AP, please go to: <http://www.gsdi.org/newslist/gsdisubscribe.asp>  
To unsubscribe, or change your email address, contact: <http://www.gsdi.org/newslist/gsdisubscribe.asp#existingsubscriber>  
Please mention SDI-AP as a source of information in correspondence you may have about items in this issue.

If you have news or information related to GIS, remote sensing, and spatial data infrastructure that you would like to highlight (e.g., workshop announcements, publications, reports, websites of interest, etc.), kindly send us the materials by the 25<sup>th</sup> of the each month to [chan@usgs.gov](mailto:chan@usgs.gov), [sdi-ap@gsdi.org](mailto:sdi-ap@gsdi.org), so that we can include the items in the next newsletter.

**PLEASE share this newsletter with colleagues who may find the information useful and suggest that they subscribe themselves.**



Back issues of the newsletter are at the GSDI website: <http://www.gsdi.org/newsletters.asp>  
Best regards, Changsup Han, Editor, [chan@usgs.gov](mailto:chan@usgs.gov).

Have you signed up for the [GSDI News List](#)? It only takes a minute, and then GSDI can alert you of special news and announcements, and you will be notified when a new issue of the SDI-AP newsletter is available.

- The GSDI Association also hosts an [SDI-AP Discussion List](#) with intermittent announcements.
- The [SDI Asia and Pacific Discussion Lists](#) are openly available for anyone to read on the web. To submit comments or to receive submitted comments by e-mail, one must register.
  - To see the collection of prior postings to the list, visit the [SDI-AsiaPacific Archives](#).
  - To post a message to all the list members, send email to [sdi-asiapacific@lists.gsdi.org](mailto:sdi-asiapacific@lists.gsdi.org).

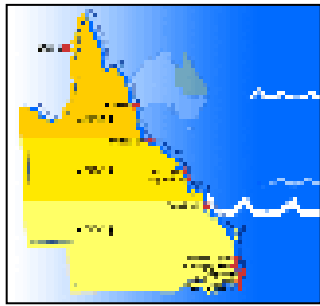
## Input to this Issue

Thank you to Kate Lance, ITC (USA/the Netherlands); Markku Villikka (FIG Director), and Dongsoo Ha (NGIS team leader, Korea Ministry of Construction and Transportation) for their contributions to the issues of this Newsletter.

## SDI News, Links, Papers, Presentations

### [New interactive data on Australian coastal website](#)

Scientists, natural resources managers and community members can now access the largest central source of coastal information and data in Australia, the OzCoast and OzEsturies website. Previously called OzEsturies, and used in more than 70 countries, the website now provides access to more coastal and estuary data and information. The new data and information can be used to improve natural resource management and for the conservation of Australia's coastal zone, estuaries and near-shore environments. The latest version of the website includes a new Geology and Geomorphology (the study of landforms) module with 3D models and case studies, an Environmental Management





# Spatial Data Infrastructure - Asia and the Pacific Newsletter



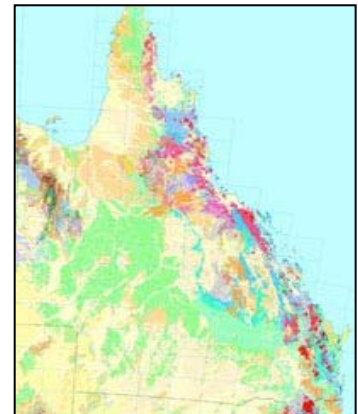
module and new and update fact sheets (Indicators module). The Environmental Management module (derived from the Coastal CRC product OzCoast) shows how data, planning and participation processes can be used in developing, implementing and reviewing catchment and coastal plans. Maps, images, reports and data can be downloaded to assist scientists, natural resources managers and policy organizations with estuary and coastal management. You can now even build your own conceptual model. For the wider community, there are fact sheets about the science underpinning estuary and coastal indicators and issues. Sitting under the Geoscience Australia banner, the website was designed with input from more than 40 agencies including government, universities and the National Estuaries Network. The former Cooperative Research Centre for Coastal Zone, Estuary & Waterway Management and National Land and Water Resources Audit team coordinated communication between agencies. [Source: WALIS website]

## [Presentations from discussion on GIS and the future of Australia's natural resources](#)

NGIS recently hosted an interesting discussion on the future of Australia's natural resources and the role GIS will play in managing sustainable systems in water and agriculture. Dr. Ray Wills, Chair of the WA Sustainable Energy Association and Manager Sustainability Services for SMEC, will shared his insights into the role that spatial can play in collecting and analyzing data to inform the Western Australian community, business and government sectors about climate change. Dr Wills has had a wide-ranging career at different times as researcher, planner, adviser, manager and academic. Ray is a recognized expert in ecology, sustainability, climate change science and the effects of expected future climates on important environmental and socio-economic issues for Australia, and policy formulation including market-based policy responses. Maurits van der Vlugt, Principal Consultant of NGIS Australia continued the discussion, focusing on sustainable water management and the role that spatial systems and the Internet are playing today and will play in the future.

## [Global digital geology map undertaken](#)

Geoscience Australia is collaborating with similar organizations from more than 40 countries to embark on one of the most ambitious geological mapping programs ever undertaken. The project, titled OneGeology, will provide internet access to the most up-to-date, worldwide geological map data at a scale of 1:1 million as part of the International Year of the Planet Earth program. This project will contribute to the International Year of Planet Earth which was proclaimed for 2008 by the General Assembly of the United Nations. The aim of the Year is to bring together the international knowledge base of geoscience and demonstrate new and exciting ways in which earth sciences can help future generations to meet the challenges involved in ensuring a safer and more prosperous world. Another benefit of the OneGeology project is that it will also transfer valuable information on web services to the developing world, accelerating the process of bringing people in less developed countries into the digital age. For more information: Lesley Wyborn, [lesley.wyborn@ga.gov.au](mailto:lesley.wyborn@ga.gov.au), Web: [The OneGeology project](#)



## [Establishment of the National Logistics Information Center](#), Korea

The National Logistics Information Center will be established to manage overall spatial data - land, maritime, and air transportation by connecting individual logistics information network across the nation. The Korean Ministry of Construction and Transportation announced that it had consulted with related Ministries and private companies on specific plans, and that it would hold a hearing to gather opinions of stakeholders of logistics industry, academia, research institutes, and other experts on August 23rd. The hearing will be a meaningful venue as first such meeting on setting up a comprehensive National Logistics Information Center. As for logistics information, spatial database has been built up by individual organization or sector, which means the current database has limitations in providing information on the entire logistics flow, and lack interconnection among various sectors. The project will be completed in five years, when opinions are collected at the upcoming hearing and then specific plans are finalized.

## [Launch of SLIP Enabler \(Western Australia\)](#)

The Shared Land Information Platform (SLIP) enabling framework was launched to State Government agencies in August 2007. The enabling framework, to be known as SLIP Enabler, is a ground-breaking tool, revolutionizing the way government spatial information is used and shared. Whilst Landgate took the lead in



# Spatial Data Infrastructure - Asia and the Pacific Newsletter



this project, its successful completion was only possible thanks to the collaborative efforts of a number of government agencies. SLIP Enabler has been many years in the making. It is a major step on the road to establishing a service delivery culture, focused on the needs of citizens and business. Enabler uses internet technology to link various government agency systems, creating a single, online access point to real-time land and property information. It overcomes the challenges of traditional government models by promoting shared outcomes whilst maintaining government agency accountability. For more information please contact Dan Sandison, [dan.sandison@walis.wa.gov.au](mailto:dan.sandison@walis.wa.gov.au).

## **[New Zealand E-government Interoperability Framework \(NZ e-GIF\) Version 3.2](#)** (July 2007)

This version (v3.2) is the ninth edition to be published. Since 2002, the e-GIF has proved to be a significant tool for enabling agencies to work together and for all-of-government initiatives. By promoting collaboration and the efficient use of resources, the e-GIF contributes to the State Services Development Goals of Networked, Coordinated and Accessible State Services. It consists of three documents: Part 1: Standards; Part 2: Policy; and Part 3: Resources.

## **[Asian Disaster Preparedness Center \(ADPC\) developing system to warn of landslides](#)**

Experts on disaster at the Asian Disaster Preparedness Center (ADPC) are developing computer model which provides early warnings for landslide – prone areas in the country. The ADPC – regional and agency – has begun its research and data collection on land use, water resources and weather patterns in the landslide – ravaged district of Lap Lae in Uttaradit province. Lap Lae is one of nine district – prone villages in Southeast Asia and South Asia selected for the agency’s so called “Hydro Meteorological Hazards Projects” or “Hydro Met”. The other eight sites are in Bangladesh, Cambodia, China, the Maldives, Burma, the Philippines, Sri Lanka, and Vietnam. Collected data will be processed in a “Super Computer.” As with the popular Google Earth computer program which features a zoom in imaging apparent, the “Hydro Met” will offer close-up analysis of the weather impact and provide a precise weather forecast over areas as small as three square kilometers. The section of the project for the Uttaradit area will be completed next July. See also from SDI-AP, Vol. 4, No. 7: [Asia Disaster Preparedness Center \(ADPC\) and IBM Thailand establish Weather Research Forecasting \(WRF\) system](#).

## **[Production sector climate risk analysis in the Philippines](#)**

This initiative is led by a cross-sectoral team at the World Bank, in close collaboration with the Philippine Department of Agriculture; the Crop Insurance Corporation (PCIC); the Philippine Atmospheric, Geophysical and Astronomical Services Administration (PAGASA); the National Mapping and Resource Information Authority (NAMRIA) and some microfinance institutions. Work started in May 2007 and should be completed by mid 2008. The initiative consists of three key activities:

- enhance the availability of reliable data on vulnerability of the agricultural production sector in the Philippines;
- strengthen institutional and operational structures for more effective risk management at national and sub-national levels, which ultimately could support the transfer of risk on the basis of parametric weather insurance or weather-based mechanisms to protect and fund safety nets for the most vulnerable;
- provide a cross-cutting analysis of lessons learned in the innovative Special Climate Change Fund (SCCF) project, including the production, packaging and application of risk information, and the role of risk transfer.

## **[Village Development Plans prepared for Aceh Province, Indonesia](#)**

Each village spatial framework, for 73 villages in 8 districts from Banda Aceh down to Nagan Raya, covers necessary infrastructure and public facilities, enhanced land use plans, economic development plans, and recommended environmental safeguards. The village development plans are part of the \$15 million for spatial planning technical assistance in Aceh and Nias provided by the Asia Development Bank (ADB) following the 2004 Tsunami and March 2005 earthquake. Besides the Village Development Plans, Subdistrict Spatial Frameworks with associated Action Plans for 19 subdistricts have been prepared while similar frameworks were scheduled for completion in July 2007 for an additional 20 districts, both in Aceh Province and Nias. Work on the preparation of District Spatial Plans for 13 districts on the east and west coast of Aceh started in June 2007.



# Spatial Data Infrastructure - Asia and the Pacific Newsletter



## [United Arab Emirates - Hydrographic Survey](#)

The Military Survey Department (MSD) of the United Arab Emirates (UAE) has contracted the United Kingdom Hydrographic Office (UKHO) Admiralty Consultancy Service to advise and assist on the planning and management of the Hydrographic Survey of their Territorial Waters. The aim of this large and challenging project is to improve safety of navigation and the environment through the provision of modern high quality hydrographic data. This project is designed to deliver swath bathymetry from a maximum depth of 165m to Mean High Water Springs. The survey area encompasses up to 30,000km<sup>2</sup> and it is envisaged that large areas of the survey will be completed with airborne systems, supported as required by surface units to meet accuracy requirements. The remainder of the areas will be completed by hull mounted systems to meet the accuracy requirements of IHO Order 1 and Special Order. Supporting tidal, oceanographic, environmental data and coastal aerial photography will also be required. It is envisaged that the survey could take up to two years to complete, starting in Spring 2008. Companies who may be interested in submitting their proposals to undertake this challenging program of work are invited to complete the Pre Qualifying Questionnaire. Deadline: 12 October 2007. [Source: Geoconnexion.com]

## [Papers from Seminar on Data Dissemination: emerging trends and issues](#), 1-3 August 2007, Kuala Lumpur, Malaysia

This seminar provides a window to the views and practice of the (public sector) statistical data community. Participants of this working session being held by the United Nations Statistics Division (UNSD) discussed emerging trends in data dissemination policies and practices, ways of targeting specific audiences and meeting user requirements including micro data access. The discussions during the meeting also were meant to address data dissemination at the international level, focusing on the new Data Access System UNdata, which aims to promote public access to UN data resources and to establish best practices in the dissemination of official statistics.

## [Kiribati workshop agrees on information sharing](#)

Representatives of Government, Parliament, civil service and media agreed to improve the sharing of public information at a workshop, held from 14 to 18 May 2007 in Tarawa, Kiribati. The workshop was funded by UNESCO's Office in Apia at the request of the Kiribati Government.

## [Newsletter of the GIS & Remote Sensing Users in the Pacific - Latest Issue \(August, 2007\)](#)

In many countries, the Pacific Islands GIS&RS Newsletter is the only publication available for technicians in the fields of GIS, RS and GPS applications. So far, the newsletter has not needed any advertisements to finance the production and distribution; it is still available for free. The production has relied upon contributors who volunteer their time. The latest issue includes the following articles:

- TerraSAR-X New European Satellite in Space
- RTK GPS for Beach Profile DTMs
- Bio-Regional Mapping of Viti Levu
- EROS-B New Israeli Satellite in Space
- Utilizing GIS to Determine the Value of Navovo Agriculture Subdivision
- Mapping Important Bird Areas (IBA) in Fiji and the Region
- MIS/GIS Established at Samoa Electric Power Corporation
- Charting the Yasawa Platform

## [Call for Papers - Pacific GIS&RS User Conference](#), 4-7 December 2007, Suva, Fiji Islands

This year's GIS&RS User Conference will be convened from 4-7 December 2007 at the University of the South Pacific (USP), Suva, Fiji Islands, where the theme for the Conference is Networking Pacific Island Countries. As in previous years, the European Union will contribute to the Conference through providing financial support to meet the cost of the airline ticket and per diem allowance for a limited number of Pacific island nationals whose papers are selected specifically for presentation. Papers submitted for consideration should show an application of GIS and RS in the context of the SOPAC-EU Project where satellite image data or training provided by the Project has been effectively utilized within their respective country. If you would like to apply, register and send an abstract with a maximum of 500 words to [joy@sopac.org](mailto:joy@sopac.org) by 7 September 2007. The abstract will be used as the pre-selection criteria. Applicants whose abstracts are selected will be required to submit draft final papers by 30 September 2007 to allow sufficient time for formal approval and for travel arrangements to be made.



# Spatial Data Infrastructure - Asia and the Pacific Newsletter



For those whose abstracts are not selected through the above process can re-submit their abstracts for consideration along with other self-funded participants. The deadline for this procedure is 9 November 2007.

**Philippine National Conference on Geographical Studies 2007**, November 22, 2007, Quezon City, Philippines

The Philippine Geographical Society (PGS) and the [Department of Geography, University of the Philippines Diliman](#), invite scholars, teachers, alumni, and other interested parties to participate in the National Conference on Geographical Studies 2007 (NCGS 2007). Concurrent with the celebration of the Geography Week in UP Diliman this November, this special NCGS aims to initiate a discussion on the recent developments in geographic research and education. More specifically, this conference will explore contemporary geographic issues and trends that are relevant to Philippine development, discuss the methodologies and teaching strategies in geographic education, generate new and innovative discourses in geographic teaching and research, and formulate a research agenda and identify emerging paradigms in geographic research. Contact: [pamela.crosby@up.edu.ph](mailto:pamela.crosby@up.edu.ph). [Source: allconferences.com]

[National reports of Australia, Japan, and New Zealand available online, prepared for XXIII International Cartographic Conference](#), held 4-10 August 2007 in Moscow, Russia  
[Australia](#), [Japan](#), and [New Zealand](#).

## Full list of GSDI Small Grants Program 2006-07

A total of 85 proposals were received in the 2007 competition. After review by international assessment teams, the GSDI Association is pleased to announce the following 20 recipients:

- Africa -- Integration of Metadata in current MadMappers Web Archive
- Americas (regional) -- Global Map of the Americas User Application Survey
- Belize Metadata -- Promoting the use of Metadata Standards in Belize
- Burkina Faso -- Technical Workshop on the Production of Metadata
- Chad -- Organization of Spatial Data at the CNAR (TCHAD) & implementation of a Spatial Metadata Base for Researchers
- Egypt ?National Spatial Data Infrastructure: Policies, Regulations, and Standards
- Guinea -- Metadata for the Management of the Guinea Current Large Marine Ecosystem Region
- Jamaica --Fostering a Culture of Metadata Production
- Kenya -- Enhancing Capacity of Mapping Services within the International Livestock Research Institute
- Kenya -- Mau Watershed (Sub-region) Spatial Data Infrastructure
- Kenya -- Metadata training for Kenyan government and non-profit cooperators
- Moldova ?Geospatial Data Standardization
- Mongolia -- Establishing web mapping services and applications
- Nepal ?Cadastral Metadata of Nepal
- Niger -- Niger National SDI Plan
- Nigeria -- Spatial Data Infrastructure Capacity Building fro Nigerian Professionals
- Pakistan -- Environmental Spatial Metadata Archive of Pakistan
- Peru -- SDI National Workshop
- South Africa -- Training of Data Managers in GIS
- South Africa -- Address Standards Workshop

The following grant recipients will receive manpower contributions from URISA's GISCorp as a part of the GSDI Grant program:

- Kenya -- GIS on Indigenous Population & Occupations in Kenya
- Mongolia -- Establishing web mapping services and applications (In addition to the cash grant)
- West Africa -- Web-map Services for Vulnerability Monitoring and Food Security in Sub-Sahara Counties



# Spatial Data Infrastructure - Asia and the Pacific Newsletter



## [Call for paper GSDI 10: Tenth International Conference for Spatial Data Infrastructure](#)

GSDI 10 invites presentations covering the full range of practice, development and research experiences that advance the practice and theory of spatial data infrastructure development. Submissions relating to the GSDI-10 theme of "Small Island Perspectives on Global Challenges: The Role of Spatial Data in Supporting a Sustainable Future" are particularly attractive. [Call for paper: 15 September 2007.](#)

Among these pressing concerns include:

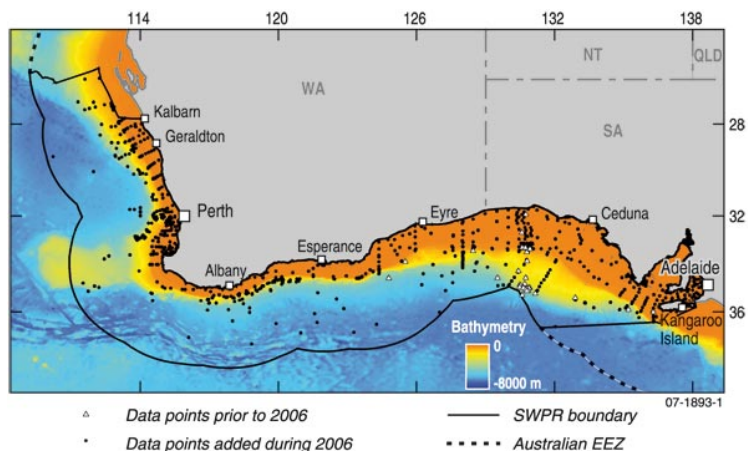
- sustainable development (e.g. pressures of tourism, preservation and conservation versus land and resource development),
- disaster prevention, warning, management, response, and recovery (e.g. hurricanes, earth quakes, tsunamis, sea level rise)
- alleviation of poverty and crime,
- economic development,
- lessening the digital divide including access to information technologies,
- ensuring food security,
- support of transportation, health and communication systems, and
- facilitating land ownership

## GIS Tools, Software, Data

### [New seabed sediment map fills marine knowledge gap](#), Geoscience Australia

Geoscience Australia in conjunction with the former Department of Environment and Heritage (now Department of Environment and Water Resources: DEWR) has completed a detailed spatial analysis of seabed geomorphology and sedimentology of the Southwest (SW) marine region. These results provide quantitative information on the geomorphology and sedimentology of the seabed for more than 1000 new and 100 existing samples and fill the largest gap in our knowledge of Australia's marine jurisdiction. Samples were procured from Geoscience Australia's existing marine sediment repository and from 10 external agencies located in Australia, North America and Europe.

Many of the samples used in this study, previously unavailable, are now archived at Geoscience Australia where they can be accessed for future study. All of the data are available from Australia's national marine samples database, [MARS](#). A report assessing quantitative sedimentology and geomorphology of the SW marine region, including maps of interpreted regional sediment distribution, will be made available on the Geoscience Australia website later this year.



[Global Map Lebanon and Sudan](#) is released by [International Steering Committee for Global Mapping](#) on August 2007.

### [Toponymic Guidelines for Map Editors and other Editors, Japan](#)

The United Nations Conference on the Standardization of Geographical Names recommends that countries should be encouraged to publish and keep up-to-date toponymic guidelines. The aim is to help map, and to help other editors understand, the geographical names of each country for the purposes of information exchange. The Geographical Survey Institute regularly modifies its instruction manual through discussions and arrangements with relevant organs, and it always submits the latest edition to the Conference.

### [Call for proposals to use Italian Space Agency COSMO-SkyMed products](#)

The Italian Space Agency (ASI) has announced an opportunity to conduct scientific research and application development projects in Earth Observation using products from the [COSMO-SkyMed dual mission](#). [COSMO-](#)



# Spatial Data Infrastructure - Asia and the Pacific Newsletter



[SkyMed](#) is a constellation composed by four satellites equipped with Synthetic Aperture Radar operating at X-band. The [opportunity](#) is open worldwide for candidates submitting proposals which cover exploitation of COSMO-SkyMed products for:

- Scientific research and application development
- COSMO-SkyMed geophysical products (Level 2) algorithm development and validation
- Demonstration of COSMO-SkyMed capabilities in thematic domains of Global Monitoring for Environment and Security (GMES) service elements and Group on Earth Observation (GEO) Program
- New Ideas for system exploitation

Submission deadline is September 15, 2007 (extended from August 31). If you have questions, contact: [csk.help@asi.it](mailto:csk.help@asi.it)

## [Interactive Online Atlas of Cambodia](#)

On 12 June 2007, Danida in Cambodia launched an interactive online atlas that provides comprehensive information on Cambodia's geographic features and natural resources as well as related social and economic issues. The information was compiled from research conducted over the past six years by Danida in Cambodia. The site will be continuously revised and in the future also will include the locations of schools and health centers, economic land concessions as well as highly detailed information on land use throughout Cambodia. The purpose is to bring the data and GIS data layers of the Atlas to the public domain. In its current form and design, the homepage does not allow users to post additional information. However, Danida and CDC in collaboration with its partners are currently exploring ways of further developing the design. CDC and the Royal Danish Embassy in Phnom Penh plan an updated user-friendly design, possibilities for subscription, uploading data, which will improve the information flow between all stakeholders and ensure full public access, for installation at the end of 2007.

## [China Historical Geographic Information System](#) (Version 4)

Version 4 of the China Historical GIS has been released, providing a fully documented database of historical administrative units in China. The new datasets may be downloaded free of charge for academic use. The complete contents of the datasets listed above are available for free download by registering your name, institution and [email address](#). Contact: Chair, China Historical Geographic Information System Project, Center For Geographic Analysis, Institute for Quantitative Social Science, Harvard University, [pkbol@fas.harvard.edu](mailto:pkbol@fas.harvard.edu).

## Geospatial Research, Applications, Reference Material

### [The Impact of Government Policies on Land Use in Northern Vietnam](#)

This report identifies the driving forces for reforestation in three villages of Northern Vietnam. Using an institutional analysis focused on the rules governing upland access and use, the authors assess the relative impact of state policies (reforestation programs and forestland allocation) on land use change. Findings show that the latter are indirectly responsible for reforestation, but not because of the incentives they provided. Instead, they disrupted the local rules governing annual crop cultivation and grazing activities leading to the end of annual cropping. Tree plantation was chosen by farmers as a last resort option. Lessons learned highlight the importance of local level studies and collective rules for land management.

### [Current Research of Center for Remote Imaging, Sensing and Processing, National University of Singapore](#)

CRISP conducts research in the processing, analysis and applications of satellite remote sensing data. The initial focus of CRISP's research was on Synthetic Aperture Radar (SAR) data processing, including interferometric SAR processing. The research focus was then extended to the applications of SAR and optical data in ocean and coastal studies, and tropical vegetation studies. CRISP has also undertaken projects in environmental monitoring, such as the daily monitoring of the regional land/forest fires and monitoring of ocean oil pollution. Currently, CRISP's research is focused on the processing and applications of very high spatial resolution imagery, hyperspectral data, and multiple polarizations SAR in order to keep pace with the recent rapid developments in remote sensing technology.

Some of the current research areas of CRISP are:



# Spatial Data Infrastructure - Asia and the Pacific Newsletter



- Very high spatial resolution imagery
  - ✓ Mapping at large scales (1:5000 to 1:25,000) with high positional accuracies
  - ✓ [Detection and enumeration of trees in high resolution imagery of oil palm plantations](#)
  - ✓ Extraction of linear features in high resolution imagery
- Digital elevation models and 3D modeling
  - ✓ [Generating digital elevation models](#) from high resolution optical and SAR data
- Cloud-free mosaics
  - ✓ [Cloud-free Mosaics of high resolution optical remote sensing images](#)
- Multiple polarization SAR
  - ✓ Land cover classification using multipolarization SAR
- Hyperspectral Data
  - ✓ Applications of hyperspectral data from the EO-1 Hyperion sensor in land cover classification
  - ✓ [Retrieval of coastal water quality parameters from ocean colour and hyperspectral data](#)
- Environmental Monitoring
  - ✓ Derivation of environmental information from wide coverage satellite data with tens of spectral bands (such as MODIS, MERIS and GLI)
  - ✓ [Detection and mapping of land/forest fires](#)
  - ✓ [Using MODIS for fire monitoring](#)
  - ✓ [Red tide study using ocean colour data](#)
  - ✓ [Oil pollution detection using satellite imagery](#)
  - ✓ [Rapid environmental evaluation using remote sensing data](#)
  - ✓ [Flood Monitoring](#)

## [Dozens of new temples at Angkor \(Cambodia\) discovered with satellite data](#)

Australian researchers using NASA technology to map the medieval city of Angkor have discovered at least 74 new temples. The research and images will be published this week by the PNAS, the world's most-cited general science journal, published by the National Academy of Sciences of the USA. Carpeted with vegetation and obscured by low-lying cloud, the ruins spill over 1,000 square kilometers outside the World Heritage site, located in present-day Cambodia, and are linked by a complex water management system. [Source: ScienceDaily.com, August 16, 2007] See also: [NASA radar reveals hidden remains at ancient Angkor](#)

## [Forecasting system provides flood warnings to vulnerable residents of Bangladesh](#)

As catastrophic floods worsen in Bangladesh, a pilot forecasting program is being used to warn thousands of residents in selected flood-prone regions. The forecasting system was designed by scientists at the National Center for Atmospheric Research (NCAR) and Georgia Institute of Technology. The pilot program began this summer with the aim of delivering 1- to 10-day forecasts directly to more than 100,000 people living on floodplains of the Brahmaputra and Ganges rivers, and then expanding to reach additional residents in coming years. It predicted the current floods a few days in advance, alerting a network of volunteers in Bangladesh last week to notify residents at risk. The system uses a combination of weather forecast models, satellite observations, river gauges, and new hydrologic modeling techniques. It is part of a larger initiative, known as Climate Forecast Applications in Bangladesh (CFAB), to improve flood and precipitation warnings in the low-lying nation. Peter Webster of the Georgia Institute of Technology is the principal investigator of the overall initiative. [Source: ScienceDaily.com, August 8, 2007]

## [Socio-ethical dimensions of spatial information technology](#)

The impacts of widespread adoption of spatial information technology (SIT) at the local level are not limited to intended objectives. Some scholars argue that mapping technologies simultaneously empower and disadvantage indigenous communities; others suggest that GIS technology privileges 'particular conceptions and forms of knowledge, knowing, and language' and engenders unequal access to information; still others view GIS as incompatible with indigenous knowledge systems and as separating the community that has knowledge from information. Tensions thus exist between new patterns of empowerment yielded through SIT and broader social, political, economic, and ethical ramifications of the technology. In order to test and refine ideas about the socio-ethical implications of SIT and the possibility of its ironic effects, the authors conducted a year-long project involving representatives of non-governmental organizations (NGOs), project staff



# Spatial Data Infrastructure - Asia and the Pacific Newsletter



members, and university researchers from Cambodia, China, Indonesia, Malaysia, the Philippines, Thailand, and the United States. This article summarizes the project's outcomes. [Source: GIS Development Magazine, August 2007]

## Training Opportunities

### [Disaster Management Training & subsequent training](#), Brisbane, Australia, 12 September 2007

Spatial Science professionals from time to time become involved with disaster relief efforts. Given the sudden nature of such events there is little time for training in the best methods of dealing with the crisis. SSI Qld has arranged for Emergency Management Queensland to provide Disaster Management Training. The Aim of this training is to provide an overview of Queensland's Disaster Management Arrangements. Contact: [admin.qld@spatialsciences.org.au](mailto:admin.qld@spatialsciences.org.au)

The course will cover the following:

- the current arrangements of the Queensland Disaster Management System
- the roles and responsibilities within the System
- the Whole-of-Government and Multi-Agency approach to disaster management
- the value of the System within local communities

### [The State of Smart Spatial Solutions Seminar](#), Brisbane, Australia, 17 September 2007

QSIC & SSI Qld present a Smart Business Solutions Seminar to provide the latest information on smart spatial solutions being designed, implemented, proposed, etc in State Government Agencies. Program details and a Registration Form are available in the Flyer linked below. [17th Sept info and registration.pdf](#)

### [Introduction to ArcGIS for Agribusiness](#), Perth, Australia, 7-9 November 2007

Attendees will be exposed to the capability of the ArcGIS software package focusing on data capture and management, map production and data querying. Specific tasks such as digitizing plantation areas, designing reusable map templates for the presentation of agricultural information, processing GPS data and calculating net plantable areas all feature prominently in the course. No previous experience with ArcGIS software is required, although experience with using Microsoft Windows is essential.

### [International training course funded by JICA](#), Japan

Overseas Engineers working for Government Organizations have the opportunity to take a training of survey and mapping in Japan, funded by JICA. The number of the participants of each course is about 8 per year. These courses are expected not only to foster the technology, but also to grow an international sense of the participants. Contact: [intex@gsi.go.jp](mailto:intex@gsi.go.jp)

- [Planning and Management of National Mapping and Surveying](#): This training will be performed for nine (9) months from the end of October to the middle of August next year.
- [Global Mapping: Contribution to Global Mapping Development by GIS](#): This training will be performed for three (3) months from the middle of August to the beginning of November.

### [International Training and Research Program: "Groundwater Governance in Asia: Theory and Practice"](#), November 13, 2007 to March 30, 2008, New Delhi, India

This training and research program organized by International Water Management Institute (IWMI), Sri Lanka and its regional offices and partner organizations in the basin countries (Bangladesh, China, India, Nepal, and Pakistan) sets out to address the pertinent and very pressing issues of groundwater management. The rationale is that groundwater is an 'endangered species' that is threatened from overuse and degradation from many sides and that needs and merits attention, appreciation and protection from all of its users as well as the public suppliers and management professionals and institutions.

- Course content and training program for Junior Fellows: A four week intensive class room course; and A 12-week training/ crosscutting research program under live field conditions
- Training Program for Senior Managers and Professionals (Senior Fellows): One-week exposure to the high level sessions on management and policy implications of groundwater governance and the global best practices; and Three-week action research/ study visits to advanced countries (Australia and/or USA etc. ) in order to retrieve as much knowledge and information on groundwater management practices in the host country to understand some fundamental practices/ processes, conflicts and challenges faced in groundwater governance and the specific ways, policies and tools



# Spatial Data Infrastructure - Asia and the Pacific Newsletter



which have been developed and employed in these developed countries. Fellows will get a fair opportunity to interact with a cross section of active stakeholders in groundwater governance and management at different levels.

For application forms: [Junior and Media Fellows](#) or [Senior Fellows](#)

## **RS & GIS Courses**, Indian Institute of Remote Sensing (IIRS)

Master's degree in science or Bachelor's degree in Engineering or equivalent qualification teaching to the field of study followed by a minimum of 5 years of environmental analysis, geology, oceanography etc. (For candidates with higher qualification, the minimum experience may be relaxed). Graduate level Knowledge in mathematics and statistics is also required. The course is directed towards the following categories of professionals

- University Educators and Researchers
- Natural Resources and Environmental management professionals and specialists

The Centre has conducted 11 Post Graduate Courses and 11 Short Term Courses in Remote Sensing and Geographic Information System. RS & GIS PG Course is held every year in October. The application form for the new Post Graduate courses in RS & GIS appears around February every year.

## **Pakistan National Centre for Remote Sensing and GIS Training Courses**, Karachi, Pakistan

- Training course on GIS, 2 weeks, starting October 20, 2007: The course is aimed at imparting theoretical concepts and developing skills to build and manage spatial databases and perform spatial analysis using GIS platform. Participants would be exposed to techniques in developing GIS databases, incorporation and integration of different thematic data layers and their corresponding attributes for performing spatial analysis and generating maps, reports based on user requirements. Additionally, the course will impart basic programming skills to develop customized applications as well as Internet GIS. Deadline: October 5, 2007.
- Training course on Remote Sensing and Digital Imaging Processing, 2 weeks, starting December 3, 2007: The course aims to develop image processing concepts, development of algorithms to achieve various image processing tasks, exploring functionalities of various off-the-shelf commercial systems and their comparison. Hands on exercises to impart practical training and develop necessary skills in image processing. Deadline: November 15, 2007.

## **Documentation Workshop on Application of Satellite Rainfall Estimation in the Hindu Kush-Himalayan Region**, ICIMOD, October 1-5, 2007, Kathmandu, Nepal. Contact: Mandira Shrestha, [mshrestha@icimod.org](mailto:mshrestha@icimod.org).

## **Special Course in Urban and Regional Planning 2007**, October, Quezon City, Philippines

The U.P. School of Urban and Regional Planning (UP-SURP) announces the holding of a Special Course on Urban and Regional Planning (SCURP) at the SURP Building in U.P. Diliman, Quezon City. This special course aims to introduce a model for local environmental planning and development that will integrate planning in the overall governance function. Although the training is primarily designed for local government officials, it also addresses the needs of officers and staff of national agencies involved in the formulation and enforcement of local planning guidelines and standards, or in implementing laws, policies, programs and projects requiring coordination with, and cooperation of local government units, private sector, and non-governmental organizations. The special course will be held for ten (10) consecutive Saturdays, beginning October 2007 so as not to interfere with the participants' office duties.

## **Funding Opportunities, Awards, Support**

### **JIRCAS Visiting Research Fellowship Program 2008**

The Japan International Research Center for Agricultural Sciences (JIRCAS) will be offering the JIRCAS Visiting Research Fellowship Program 2008, tentatively scheduled from June 2008 to May 2009. This Fellowship aims at the promotion of collaborative research to address globally the various problems in agriculture, forestry and fisheries confronting countries in the developing regions. Application period: October, 2007. This one-year Fellowship comes in two types:

- Tsukuba-Okinawa Type



# Spatial Data Infrastructure - Asia and the Pacific Newsletter



The applicant must be a national of a developing country, where he is currently employed in a research organization or a university, and is actively engaged in research relating to agriculture, forestry and fisheries. He/She must hold at least a Master's degree in a field relating to socio-economics and natural sciences and technology or equivalent qualifications in related fields.

- Project Site Type

The applicant must be a national of a developing country, where the research theme for which he is applying will be implemented. He/She must be actively engaged in research relating to agriculture, forestry and fisheries. He/She must hold at least a Master's degree in a field relating to socio-economics and natural sciences and technology or equivalent qualifications in related fields.

## [Association of Rhodes Scholars in Australia 2008 Visiting Postgraduate Scholarship](#)

The Association of Rhodes Scholars in Australia invites applications from eligible students enrolled in a research higher degree program at a Commonwealth university outside Australia to visit Australia for six to twelve months to consult with leading scholars in their research area and undertake research in Australia relevant to their thesis project. A grant-in-aid to a maximum of A\$20,000 inclusive of the Scholar's travel expenses to and from Australia. Tenable at any Australian university (Scholarship applicants are encouraged to consider visiting other Australian universities during their stay to meet with academic staff and postgraduate students who share their research interests). The successful applicant will normally receive a stipend from their home university for pursuit of their studies. The Scholarship holder remains enrolled at their home University. Deadline: 12 October 2007.

## [Rothamsted International Fellowship Scheme](#)

The scheme was initiated in 1993 to commemorate the 150th anniversary of the founding of [Rothamsted Research](#), which is the World's oldest agricultural research station. The Fellowship scheme is managed by Rothamsted International and enables scientists from developing and less developed countries to carry out research projects for 6 to 12 months in collaboration with partner scientists at Rothamsted Research. In many cases, collaboration and contact has been maintained for further research projects and for joint publications in peer-reviewed science journals. Currently, Cuba, India, Kenya and China are particularly strong institutional linked with. Deadline: 5 October 2007. Contact [rothamsted.international@bbsrc.ac.uk](mailto:rothamsted.international@bbsrc.ac.uk)

## [IDRC Internship Award](#)

The IDRC Internship awards provide exposure to research for international development through a program of training in research management and grant administration under the guidance of IDRC program staff. The internship is designed to provide hands-on learning experiences in research program management - in the creation, dissemination and utilization of knowledge from an international perspective. Developing-country nationals residing in their home country (or another country) must hold their internships in the appropriate [Regional Office](#). Deadline: September 12, 2007.

## [2007 Global Development Awards and Medals Competition](#)

Under each of the following five themes, GDN welcomes submissions from all branches of the social sciences (Economics, Political Science, Sociology etc):

- Fragile States: Addressing Vulnerability
- Household Exposure to Risk: Effects on Poverty
- The Rule of Law: Providing Security for Development
- Women's Rights, Security and Development: Challenges and Opportunities
- Natural Resources: Risks and Implications for Sustaining Development

Submissions can be for a new research proposal or for a completed research paper. Submissions from qualified female researchers are particularly encouraged. Deadline: September 17, 2007. Contact: [awards@gdnet.org](mailto:awards@gdnet.org).

## [2nd Arab Technology Business Plan Competition](#)

The Arab Science & Technology Foundation (ASTF) and Intel Corporation announced the launch of the Second Arab Technology Business Plan Competition at a press event in Dubai. Speaking at the press event, Dr. Abdalla A. Alnajjar, President of ASTF said: "The Arab Science and Technology Foundation, through this regional competition seeks to increase Arab investment in Technology and promote entrepreneurship in the Arab world. The Second Arab Technology Business Plan Competition will create more awareness on potential opportunities in technology startups, recognize innovative and outstanding technology business



# Spatial Data Infrastructure - Asia and the Pacific Newsletter



ideas, plans and startups and increase investments in Arab technology startups by providing Arab investors with diverse & well selected group of startups to invest in.” For this year, the Universities competition (Arab Universities Technology Business Plan Competition) will be merged with the mature entrepreneurs’ competition, and several new categories will be created. The final round of the competition will be held in Jordan on the 10 & 11 of December this year. Contact: [BPC@astf.net](mailto:BPC@astf.net).

## [IUCN-NL Ecosystem Grants Program \(EGP\)](#)

The [Ecosystem Grants Program \(EGP\)](#) is part of the Ecosystems and Human Well-being program - developed in cooperation with the Dutch IUCN members and Government and in alignment with the IUCN Global Program. EGP funds projects of local organizations in the South that link ecosystem conservation and poverty issues. Only local NGOs and Community-Based Organizations (CBOs) with a proven commitment to ecosystem conservation and the sustainable use of natural resources can submit proposals. Maximum grant size is Euro 85,000 (there is no minimum). The deadline for pre-proposals from Mekong River Basin [Thailand, Cambodia, Vietnam, Laos, Myanmar (Burma), and Yunnan Province in China, but only as far as located within the Mekong River Basin] is October 1, 2007. The deadline for pre-proposals from Southeast Asia [Indonesia, Malaysia, Philippines, PNG] is 1 March 2008 -- for Southeast Asia, check the EGP website for specific criteria after 15 January 2008. If you think your project meets the EGP criteria, then download the pre-proposal form, fill it in, and return it by e-mail to [proposals@iucn.nl](mailto:proposals@iucn.nl).

## [Research into Use \(RIU\) Innovation Challenge Fund: Phase 1 \(Asia\)](#)

The purpose of the Innovation Challenge Fund is to provide financial support to take promising research, funded by DFID (and other agencies where appropriate), to the next stage of use. The initiatives will contribute to RIU’s purpose by delivering significant use of Renewable Natural Resources Research Strategy (RNRRS) and other natural resources research outputs for the benefit (direct or indirect) of poor men and women in different contexts. Deadline for concept notes: September 30, 2007 (GMT+1).

## [NAVTEQ Global LBS Challenge](#)

Now in its fifth year, the NAVTEQ Global LBS Challenge encourages application developers around the world to build innovative location-based services (LBS) that work with mobile phones and/or wireless handheld devices using dynamic positioning technology and NAVTEQ’s maps. NAVTEQ Global LBS Challenge contestants typically range from start-up developers hoping to launch their first commercial application to established companies pushing the limits of their creativity. This annual competition has helped eight previous participants receive venture capital funding and nine past winners have launched commercial applications on major wireless carriers. Contact: [info@lbschallenge.com](mailto:info@lbschallenge.com).

- [Europe, Middle East and Africa \(EMEA\) - Registration](#) is now open (submit entry form online by October 12, 2007, and entries themselves must be uploaded by November 16, 2007)
- Americas- Registration opens September 14
- Asia-Pacific (APAC) - Registration opens October 29

## [Tele Atlas Maps in Apps 2007 Contest](#)

Tele Atlas Maps in Apps 2007 contest is accepting applications. Maps in Apps is part of the Tele Atlas LBS Innovators Series, an ongoing program held in conjunction with Tele Atlas DeveloperLink. Developers taking advantage of this opportunity will realize the following benefits: increased visibility, credibility and success with key participants in the industry including investors, carriers and technology providers. Participation is open to all mobile application developers using Tele Atlas data. One grand prize winner will be awarded \$25,000 in cash and \$50,000 in Tele Atlas map data; two runners up each will receive \$10,000 in cash and \$20,000 in Tele Atlas map data. Registration is open through September 23, 2007.

## Employment Opportunities

### [Range Ecology and Management Research Scientist](#), Aleppo, Syria

ICARDA is seeking an a strong range ecology and management research scientist to work as part of an interdisciplinary team that focuses on developing improved production systems in dry lands subject to land degradation. The position will focus on the generation of technological, institutional and policy options (TIPOs) for better rangeland management using community participatory approaches. The incumbent will be expected to build a program on range ecology / range management that contributes to mitigating the current



# Spatial Data Infrastructure - Asia and the Pacific Newsletter



and future challenges such as climate change, desertification and loss of biodiversity. S/He should be familiar with the global agreements that aim to combat desertification, sustain and manage natural resources and reduce human and environmental poverty. S/He should be familiar with the use of state-of-the-art tools in monitoring and resource mapping. Deadline: 6 September 2007.

## [Soil Conservation/Land Management Specialist](#), Aleppo, Syria

The incumbent will work jointly with ICARDA scientists from other disciplines (ecology, agronomy, soil fertility, water management, pasture and range management, and socioeconomics), with national program partners, and with advanced research institutes to identify the main technical, social and policy issues of soil and land management problems in Central and West Asia and North Africa. With PhD in soil conservation/land management, the successful candidate will have demonstrated competence in systems-oriented land management and land-use planning, and extensive field research experience in the application of conservation management practices for land and soil, part of which should have been in developing countries; capability and willingness to work collaboratively in a multidisciplinary and multinational context; proven managerial capabilities; Computer skills and fluency in spoken and written English. Capability in French and/or Arabic and GIS and remote sensing capabilities would be an advantage. Deadline: 6 September 2007.

## [Post-Doc Researcher in Geodetic Oceanography](#), Porto, Portugal

CIIMAR is a research unit in the area of Marine Sciences looking for a Post-Doc Researcher in Geodetic Oceanography. Applicants should have experience at pos-doc level in Geodesy, preferably in sea-level determination, using heterogeneous data (satellite borne, airborne and marine borne). The candidate is expected to develop an independent research program in synergy with existing research areas and strengthen research in the domain of oceanography. Application deadline: 11 September 2007

## [Transportation Engineering - Assistant/Associate Professor](#), Pathumthani, Thailand

The Transportation Engineering Field of Study, School of Engineering and Technology, Asian Institute of Technology (AIT) is inviting applications for a faculty position at the Assistant/Associate Professor level. Prospective candidates should have a Ph.D. degree from a well-recognized institution or university with a strong research background and interest. Excellent record of publications in international journals, books, conferences, etc. and teaching and research experience would be considered. Related professional working experience in the public or private sector would be an added advantage. As the working language of AIT is English, the applicant must be fluent in both spoken and written English. Contact: [deanset@ait.ac.th](mailto:deanset@ait.ac.th), Application deadline: 30 September 2007

## [Geoscience Australia Employment opportunity](#), Canberra

Geoscience Australia is Australia's national geoscience research and geospatial information agency. Located within the Industry, Tourism and Resources portfolio, Geoscience Australia is directly accountable for its performance to its Ministers, the Government and through them to the Australian community.

- [Geomorphologist](#): Application dead line 7 September 2007, GA Band 2 Level 4, Ongoing, Geospatial and Earth Monitoring Division
- [GIS Cartographer](#): Application dead line 7 September 2007, GA Band Level 2, None-Ongoing, Geospatial and Earth Monitoring Division
- [Satellite Image Processing Operator](#): Application dead line 7 September 2007, GA Band 1 Level 2, None-Ongoing, Geospatial and Earth Monitoring Division
- [Cartographer/GIS Officer](#): Application dead line 14 September 2007, GA Band 2 Level 3/4, Ongoing, Geospatial and Earth Monitoring Division
- [Cartographer/GIS Officer](#): Application dead line 14 September 2007, GA Band 2 Level 2/3, Ongoing, Geospatial and Earth Monitoring Division
- [GIS Specialist - Application Developer](#): Application dead line 14 September 2007, GA Band 2 Level 3/4, Ongoing, Geospatial and Earth Monitoring Division
- [Chief Geophysicist \(Group Leader\)](#): Application dead line 21 September 2007, GA Band 3 Level 8, Ongoing, Petroleum and Marine Division
- [Geoscientists \(6 positions\)](#): Application dead line 21 September 2007, GA Band 2/3 Level 3/7, Ongoing, Petroleum and Marine Division



# Spatial Data Infrastructure - Asia and the Pacific Newsletter



- [Basin Analyst/Petroleum Geoscientists](#): Application dead line 21 September 2007, GA Band 3 Level 5/6, Ongoing, Petroleum and Marine Division

## Other

### National Platforms for Disaster Reduction - Bangladesh, Cambodia and Sri Lanka

This study conducted by the Asian Disaster Preparedness Center (Thailand) looks into the disaster management (DM) framework for three South (East) Asian countries: Bangladesh, Cambodia and Sri Lanka. It examines the existing organizational structure involved in DM in the countries, identifies the existing actors and networks at the national level, potential supporters and the areas of activities. This analysis will help in understanding the potential for development of the national platform for the country in question, and will also point out how it would function in the context of the existing structure.

### Disaster Preparedness in the Himalayan Region

This [website](#) is prepared under the DIPECHO funded and ICIMOD implemented project living with Risks - Sharing Knowledge on Disaster Preparedness in the Himalayan Region. The website serves as a Knowledge Sharing Platform for supporting key practitioners with current knowledge in the field of disaster preparedness mainly for floods, landslides, and earthquakes - through interaction and exchange of experiences, and important relevant documents. It includes country reports on Disaster Preparedness for Natural Hazards for Bangladesh, India, Nepal, and Pakistan. Also see: Conclusions from Two Workshops on Planning Processes, Social Inclusion and Local Knowledge for [Disaster Preparedness](#), 7-9 August 2006 and 9-11 May 2007 in Nepal.

## Conferences, Events

Items newly added to this listing of events since the last SDI-AP issue are marked \* **NEW** \*

Date	Location	Event
<b>September 2007</b>		
<b>29 August - 1 September</b>	Bakosurtanal; Jakarta	<a href="#">2nd Indonesian Geospatial Technology Exhibition</a>
<b>31 August - 3 September</b>	Brisbane, Australia	<a href="#">2007 Asia Pacific Cities Summit</a>
<b>3-6 September</b>	Brisbane, Australia	<a href="#">10th International River Symposium and Environmental Flows Conference</a> Abstract deadline: 31 January 2007.
<b>3-6 September</b>	Portsmouth, United Kingdom	<a href="#">Society of Cartographers Summer School 2007</a> Contact: <a href="mailto:soc-summer-school@port.ac.uk">soc-summer-school@port.ac.uk</a>
<b>3-7 September</b>	Stuttgart, Germany	<a href="#">51<sup>st</sup> Photogrammetric Week</a> , Contact: Martina Kroma, <a href="mailto:martina.kroma@ifp.uni-stuttgart.de">martina.kroma@ifp.uni-stuttgart.de</a>
<b>5-6 September</b>	Shangri-la, Hongkong	<a href="#">Location Asia 2007</a> , Contact: <a href="mailto:info@location.net.in">info@location.net.in</a>
<b>5-6 September</b> * <b>NEW</b> *	Beijing, China	<a href="#">China Location Based Services Summit</a>
<b>6-8 September</b>	Helsinki, Finland	<a href="#">Seminar on Compulsory Purchase and Compensation</a> , Organised by FIG Commission 9.
<b>8-11 September</b>	Lijiang, China	<a href="#">1st International Symposium on Geospatial Health</a> , Theme: Geospatial Health and Control of Fish-borne Parasites in Asia
<b>10-13 September</b>	Chengdu, China	<a href="#">The Fourth International Conference on Debris-Flow Hazards Mitigation</a> Organized by ICIMOD. Call for papers (Submittal of manuscripts for peer review): <a href="#">August 15, 2006</a> .
<b>10-17 September</b>	Inner Mongolia, China	<a href="#">International Workshop on Environmental Changes and Sustainable Development in Arid and Semi-arid Regions</a> , Contact: Xiaoping Yang, <a href="mailto:xpyang@263.net.cn">xpyang@263.net.cn</a> , <a href="mailto:xpyang@mail.igcas.ac.cn">xpyang@mail.igcas.ac.cn</a> . Abstract deadline: <a href="#">June 1, 2007</a> .
<b>11-13 September</b>	Qingdao, China	<a href="#">2nd Global Conference on Large Marine Ecosystems</a>



# Spatial Data Infrastructure - Asia and the Pacific Newsletter



<b>12-14 September</b>	Warsaw, Poland	<a href="#">21st ENVIROINFO 2007</a> Environmental Informatics Meets Systems Research
<b>12-14 September</b>	Beijing, China	<a href="#">7th International Workshop of Geographical Information Systems (IWGIS'07)</a>
<b>13-14 September</b>	Hong Kong, China	<a href="#">Location Asia 2007</a> , Contact: Niraj, <a href="mailto:info@location.net.in">info@location.net.in</a>
<b>17-18 September</b>	Beijing, China	<a href="#">5<sup>th</sup> International Conference on Current and Future Trends in Bridge Design, Construction and Maintenance</a>
<b>17-23 September</b>	Guangzhou and Three Gorges, China	<a href="#">2nd International Conference of GIS/RS in Hydrology, Water Resources and Environment (ICGRHWE'07) &amp; 2nd International Symposium on Flood Forecasting and Management with GIS and Remote Sensing (FM2S'07)</a> , Abstract deadline: <u>March 31, 2007</u> . Contact: <a href="mailto:hydrolab@zsu.edu.cn">hydrolab@zsu.edu.cn</a> .
<b>19-21 September</b>	Munich, Germany	<a href="#">Photogrammetric Image Analysis (PIA) 2007</a>
<b>19-23 September</b>	Melbourne, Australia	<a href="#">2007 Conference on Spatial Information Theory (COSIT)</a> Contact: Stephan Winter, <a href="mailto:winter@unimelb.edu.au">winter@unimelb.edu.au</a> .
<b>21-22 September</b> <b>* NEW *</b>	Colorado, USA	<a href="#">GEOSS Workshop: The User and the GEOSS Architecture XVI "Regional Decisions for Climate Change"</a>
<b>21-24 September</b>	Nanjing, China	<a href="#">APAC 2007: The Fourth International Conference on Asian and Pacific Coasts</a> Abstract deadline: <u>December, 15, 2006</u> . Contact: <a href="mailto:jfge@nhri.cn">jfge@nhri.cn</a> .
<b>24-27 September</b>	Victoria, Canada	<a href="#">2007 Free Open Source Software For Geospatial (FOSS4G) Conference</a>
<b>24-28 September</b>	Budapest, Hungary	<a href="#">XIII ISM Congress</a>
<b>25-26 September</b>	Brussels, Belgium	<a href="#">International GIS Crime Mapping</a>
<b>25-27 September</b>	Chengdu, China	<a href="#">WG VII/6+7 Joint Conference on Techniques &amp; Applications of Optical &amp; SAR Imagery Fusion 'Mapping without the Sun'</a> Contact: Jixian Zhang, <a href="mailto:zhangjx@casm.ac.cn">zhangjx@casm.ac.cn</a> .
<b>25-27 September</b>	Leipzig, Germany	<a href="#">INTERGEO 2007</a> , Contact: <a href="mailto:info@hinte-messe.de">info@hinte-messe.de</a>
<b>26-28 September</b>	Stockholm, Sweden	<a href="#">ESRI European User Conference (EUC07)</a> , Contact: <a href="mailto:info@euc2007.com">info@euc2007.com</a>
<b>October 2007</b>		
<b>1-2 October</b>	Palisades, NY, USA	<a href="#">Global Roads Workshop: Developing Useable Data for Tomorrow's Needs</a> , The workshop is by invitation only; interested individuals may contact Alex de Sherbinin at <a href="mailto:Adesherbinin(a)ciesin.columbia.edu">Adesherbinin(a)ciesin.columbia.edu</a> .
<b>1-3 October</b>	Mandaluyong, Philippines	<a href="#">International Conference on the Millennium Development Goals Statistics (ICMDGS)</a>
<b>1-3 October</b>	Geneva (Carouge), Switzerland	<a href="#">ISGI 2007 2nd International CODATA Symposium on Generalization of Information</a> , Contact: Horst Kremers, <a href="mailto:office@Horst-Kremers.de">office@Horst-Kremers.de</a>
<b>2-5 October</b>	Quebec City, Canada	<a href="#">GeoCongress Quebec 2007</a> Histoire de voir le monde and General Assembly of the Federation des Geometres Francophones
<b>6-10 October</b>	Istanbul, Izmir, Ankara, Turkey	<a href="#">12th International IEFT Fall 2007</a> , Contact: Daniz Akar, <a href="mailto:info@ieft.net">info@ieft.net</a>
<b>7-12 October</b>	Christchurch, New Zealand	<b>NZIS/South East Asian Survey Conference (SEASC) / CASLE Conference</b> Contact: email: <a href="mailto:nzis@surveyors.org.nz">nzis@surveyors.org.nz</a>
<b>8-10 October</b>	Santander, Spain	<a href="#">CoastGIS 2007</a> , Contact: <a href="mailto:garrigamc@unican.es">garrigamc@unican.es</a>



# Spatial Data Infrastructure - Asia and the Pacific Newsletter



14-15 October	Alabama, USA	<a href="#">The Rocket City Geospatial Conference</a>
14-16 October	Beijing, China	<a href="#">International Conference on Research and Practical Issues of Enterprise Information Systems (IFIP TC8)</a> , Contact: <a href="mailto:ssfqjy@263.net">ssfqjy@263.net</a> .
14-20 October	Australia	<a href="#">2007 Earth Science Week celebrations</a> , Contact: <a href="mailto:Fiona.Wright@csiro.au">Fiona Wright</a>
15-17 October	Sydney, Australia	<a href="#">ESRI Australia's 21st National Client Conference (OZRI 2007)</a>
16-18 October	Chiang Mai, Thailand	<a href="#">The Future of Forests in Asia and the Pacific: Outlook for 2020</a> , Contact: <a href="mailto:patrick.durst@fao.org">patrick.durst@fao.org</a> .
16-19 October	Dongying City, China	<a href="#">3<sup>rd</sup> International Yellow River Forum (IYRF)</a> Sustainable Water Resources Management and Delta Ecosystem Maintenance, Abstract deadline: <u>October 31, 2006</u> . Contact: <a href="mailto:iyrf@yellowriver.gov.cn">iyrf@yellowriver.gov.cn</a> .
18-23 October	Kuala Lumpur, Malaysia	<a href="#">3rd Ministerial Conference on Space Applications for Sustainable Development in Asia and the Pacific</a>
22-24 October	Beijing, China	<a href="#">4th International Conference on Agriculture Statistics (ICAS-4)</a> World Bank Fund Application for <a href="#">this Conference</a> , Contact: <a href="mailto:icas4@stats.gov.cn">icas4@stats.gov.cn</a> . Abstracts deadline: extended to 30 April 2007.
22-26 October	Alotau, Papua New Guinea	<a href="#">8th Pacific Islands Conference on Nature Conservation and Protected Areas</a>
22-26 October	Kocaeli, Turkey	<a href="#">International Earthquake Symposium Kocaeli 2007</a> , Contact: <a href="mailto:ertanpeksen@kou.edu.tr">ertanpeksen@kou.edu.tr</a>
23 October	Daegu, South Korea	<a href="#">9th International Cooperative Seminar between KAGIS and GISA</a>
25 October <b>* NEW *</b>	Queensland Australia	<a href="#">Cadastral Reinstatement Workshop</a>
28 – 31 October <b>* NEW *</b>	Jeju, Korea	<a href="#">2nd United Cities and Local Governments Congress (UCLG) World Congress</a>
28 October – 1 November	Perth, Western Australia	<a href="#">2nd IWA – ASPIRE</a> , Contact: <a href="mailto:aspire@awa.asn.au">aspire@awa.asn.au</a>
28 October – 2 November	Rajasthan, India	<a href="#">12<sup>th</sup> World Lakes Conference</a> Contact: <a href="mailto:dalwani@taal2007.org">dalwani@taal2007.org</a> , <a href="mailto:info@taal2007.org">info@taal2007.org</a>
29 October <b>* NEW *</b>	Ottawa, Ontario	<a href="#">Great Lakes Regional Data Exchange 2007: Sharing Common Resources</a>
29 – 30 October <b>* NEW *</b>	Chiba City, Japan	<a href="#">13rd CEReS International Symposium on Remote Sensing</a> Theme: Disaster Monitoring and Mitigation in Asia. Poster registration deadline: 15 September 2007.
29 October - 1 November	Christchurch, New Zealand	<a href="#">9<sup>th</sup> South-East Asian Survey Congress</a>
29-31 October	Muscat, Oman	<a href="#">2007 ESRI Middle East &amp; North Africa Users Conference</a> Register online prior to <u>October 4, 2007</u>
29-31 October	Rome, Italy	<a href="#">7th SMOS workshop</a> , Contact: <a href="mailto:yann.kerr@cesbio.cnes.fr">yann.kerr @ cesbio.cnes.fr</a>
29 October - 2 November	Beijing, China	<a href="#">Forum 11: Equitable Access: Research challenges for health in developing countries</a> , Contact: <a href="mailto:info@globalforumhealth.org">info@globalforumhealth.org</a> .
<b>November 2007</b>		
2-3 November	Gold Coast, Australia	<a href="#">International Map Trade Association (IMTA) (Asia Pacific) Annual Conference &amp; Trade Show</a> , Presentation application deadline: <u>June 29, 2007</u> .
2-5 November <b>* NEW *</b>	Beijing, China	<a href="#">Addressing Threats to Human &amp; Environmental Health in the Pacific Basin</a>



# Spatial Data Infrastructure - Asia and the Pacific Newsletter



5-7 November	Johor Bahru, Malaysia,	<a href="#">Joint International Symposium and Exhibition on Geoinformation 2007 &amp; International Symposium on GPS/GNSS 2007</a> , Contact: Dr. Md. Nor Kamaruddin, <a href="mailto:md.nor@fksq.utm.my">md.nor@fksq.utm.my</a>
5-9 November <b>* NEW *</b>	Auckland, New Zealand	<a href="#">1st International Workshop on Semantic and Conceptual Issues in Geographic Information Systems (SeCoGIS 2007)</a>
6-8 November	Kuala Lumpur, Malaysia	<a href="#">International Symposium &amp; Exhibition on Geoinformation/Global Navigation Satellite System (ISG/GNSS 2007)</a> Contact: Dr. Md. Nor Kamaruddin, <a href="mailto:md.nor@fksq.utm.my">md.nor@fksq.utm.my</a> , Deadline for abstracts: 30 April 2007
8-10 November	Hong Kong SAR, China	<a href="#">4th International Symposium on LBS and TeleCartography</a> . Organised by Department of Land Surveying and Geoinformatics of the Hong Kong Polytechnic University and the Vienna University of Technology and co-sponsored by ICA and IAG commissions.
10-12 November <b>* UPDATED *</b>	Kuala Lumpur, Malaysia	<a href="#">Workshop on Spatial Planning and Decision Support Systems</a> Contact: <a href="mailto:kfloh03@yahoo.com">kfloh03@yahoo.com</a> , <a href="mailto:shattri@eng.upm.edu.my">shattri@eng.upm.edu.my</a> .
12-15 November	San Jose, Costa Rica	<a href="#">6<sup>th</sup> FIG Regional Conference</a>
12-16 November	Kuala Lumpur, Malaysia	<a href="#">28th Asian Conference on Remote Sensing (ACRS 2007)</a> , Abstract deadline: <u>July 16, 2007</u> . Contact: <a href="mailto:acrs2007@macres.gov.my">acrs2007@macres.gov.my</a> .
15-17 November	Riaydh, Saudi Arabia	<b>WG VII/7 Workshop</b> , Contact: Sultan Al Sultan, <a href="mailto:rsensing_2004@yahoo.com">rsensing_2004@yahoo.com</a>
19-23 November	Kyoto, Japan	<a href="#">1st Joint International ALOS Data Nodes PI Symposium</a>
20-21 November <b>* NEW *</b>	Sintok, Malaysia	<a href="#">Rural ICT Development Conference 2007 (RICTD '07)</a> , Paper deadline: 15 September 2007.
20-22 November	Shanghai, China	<a href="#">CHINA GEO-TECH 2007</a> , Contact: <a href="mailto:togetherbjo@together-expo.com">togetherbjo@together-expo.com</a>
20-23 November	Kuala Lumpur, Malaysia	<a href="#">WG I/6 Workshop on Earth Observation Small Satellites for Remote Sensing Applications</a> Contact: Mazlan Hashim, <a href="mailto:mazlan@fksq.utm.my">mazlan@fksq.utm.my</a>
21-23 November	Bangalore, India	<a href="#">14th Session of the Asia-Pacific Regional Space Agency Forum (APRSF-14)</a>
21-24 November	Cairns, Australia	<b>Hydro 2007 &amp; Trade Exhibition - Focus on Asia</b> : Meeting the Interface Challenges of the Littoral Zone. Ocean Mapping Group – Multibeam Echosounder Course, Contacts: <a href="mailto:john.maschke@hydro.gov.au">john.maschke@hydro.gov.au</a>
22 November <b>* NEW *</b>	Quezon City, Philippines	<b>Philippine National Conference on Geographical Studies 2007</b> Contact: <a href="mailto:pamela.crosby@up.edu.ph">pamela.crosby@up.edu.ph</a> .
26-29 November	Burwood, Australia	<a href="#">Asia-Pacific EcoHealth Conference: Sustaining People and Places in a Changing World</a> , Abstract deadline: <u>August 14, 2007</u> . Contact: <a href="mailto:marika.thomson@deakin.edu.au">marika.thomson@deakin.edu.au</a> .
26-30 November	Singapore	<a href="#">Energex2007</a>
27-29 November	Taipei, Taiwan	<a href="#">2007 Conference on Urban Disaster Reduction: Large Scale Disaster Management</a>
27-29 November	Perth, Australia	<a href="#">ESA 2007 Annual Conference</a>
28-30 November	Bangkok, Thailand	<a href="#">8th United Nations Geospatial Information WorkingGroup (UNGIWG) Plenary</a>
28-30 November	Singapore	<a href="#">ESRI South Asia User Conference</a>
29-30 November	Colombo, Sri Lanka	<a href="#">Annual Symposium on Poverty Research in Sri Lanka</a> Abstract deadline: <u>July 31, 2007</u> .



# Spatial Data Infrastructure - Asia and the Pacific Newsletter



29-30 November	Berlin, Germany	<a href="#">CODATA International Symposium on LandCover Logic</a> , Contact: <a href="mailto:office@Horst-Kremers.de">office@Horst-Kremers.de</a>
29-30 November	Mexico City, Mexico	<a href="#">Second International Conference on Geospatial Semantics (GeoS 2007)</a> , Paper deadline: June 15, 2007.
30 November-3 December	Melbourne, Australia	<a href="#">Asia Pacific EcoHealth Conference</a> , Ecology and Health: People & Places in a Changing World
<b>December 2007</b>		
2-4 December	Muscat, Oman	<a href="#">4th International Conference on Wadi Hydrology</a> , Abstract deadline: 30 June 2007.
3-5 December	Guangzhou, China	<a href="#">United Nations/China Regional UN-SPIDER Workshop</a> , Organized by UNOOSA and the Chinese National Space Administration (CNSA) and with the support of the Government of China.
3-5 December <b>* NEW *</b>	Guangzhou, China	<a href="#">6th International Workshop on Digital Watermarking</a> , Contact: <a href="mailto:ist@mail.sysu.edu.cn">ist@mail.sysu.edu.cn</a> .
3-6 December	Melbourne, Australia	<a href="#">3rd International Conference on Intelligent Sensors, Sensor Networks and Information Processing (ISSNIP) 2007</a> , Abstract deadline: July 31, 2007.
4-6 December	Moscow, Russia	<a href="#">3rd International conference "Earth from space - The Most Effective Solutions"</a> Contact: <a href="mailto:conference@scanex.ru">conference@scanex.ru</a> . Abstract deadline: September 20, 2007.
4-7 December	Suva, Fiji	<a href="#">Pacific Islands GIS/RS Conference</a> , Abstract deadline: November 9, 2007.
6-7 December	Moscow, Russia	<a href="#">7th International Conference on Laser Scanning</a>
10-12 December	Bahrain	<a href="#">2007 Middle East Spatial Technology Conference &amp; Exhibition</a> , Abstract deadline: 28 February 2007.
10-13 December	Macao SAR, China	<a href="#">International Conference on Theory and Practice of Electronic Governance</a> , Abstract deadline: 16 July 2007.
12-14 December	Delft, Netherlands	<a href="#">3D Geoinfo07. 2nd International Workshop on 3D Geo-Information</a> : Requirements, Acquisition, Modeling, Analysis, Visualization. Contact: <a href="mailto:3Dgeoinfo07@tudelft.nl">3Dgeoinfo07@tudelft.nl</a>
17-19 December	Trivandrum, India	<a href="#">Trans Asiatic GIS Society Conference on GIS "b-GIS@Asia"</a> , Contact: <a href="mailto:bgisasia.info@tagsasia.org">bgisasia.info@tagsasia.org</a>
20-22 December	Bangkok, Thailand	<a href="#">International Conference on Computer, Information, and Systems Science, and Engineering (CISE 2007)</a> , Paper submission deadline: September 15, 2007.
21-23 December	Bangkok, Thailand	<a href="#">2nd International Conference on Health GIS</a> , Papers can be accepted for oral presentation only if at least one of the authors has registered by October 30, 2007. Contact: <a href="mailto:healthgis07@gmail.com">healthgis07@gmail.com</a> .
<b>January 2008</b>		
January	Valencia, Spain	<a href="#">Commission 3 Annual Meeting and Workshop "Spatial Information in Environmental Management"</a> , Organized by FIG Commission 3
6-7 January <b>* NEW *</b>	Tehran, Iran	<a href="#">4th GIS86 Conference &amp; ISPRS Workshop on Geoinformation and Decision Support Systems</a> , Abstract deadline: 15 September 2007. Contact: <a href="mailto:gis86sdss@ncc.neda.net.ir">gis86sdss@ncc.neda.net.ir</a> .
7-8 January	Hong Kong	<a href="#">Virtual Geographic Environments - An International Conference on Developments in Visualization and Virtual Environments in Geographic Information Science</a> , Abstract deadline: July 31, 2007.
12-15 January	Jinju, Korea	<a href="#">6th International Symposium on City Planning and Urban Management in Asian Countries</a> , Deadline date of abstract: 15 April 2007.



# Spatial Data Infrastructure - Asia and the Pacific Newsletter



<b>17-18 January</b>	Tokyo, Japan	<a href="#">ESRI Asia Pacific User Conference</a>
<b>22-24 January</b>	New Delhi, India	<a href="#">Map India</a>
<b>February 2008</b>		
<b>5-8 February</b>	Sydney, Australia	<a href="#">Global Workshop on High Resolution Digital Soil Sensing &amp; Mapping</a> , Contact: <a href="mailto:viscarra-rossel@usyd.edu.au">viscarra-rossel@usyd.edu.au</a> .
<b>6-8 February</b> <b>* NEW *</b>	New Delhi, India	<a href="#">Map India 2008</a> , Contact: <a href="mailto:info@mapindia.org">info@mapindia.org</a>
<b>7-9 February</b> <b>* NEW *</b>	New Delhi, India	<a href="#">Delhi Sustainable Development Summit (DSDS) 2008</a> , Theme: Sustainable Development and Climate Change, Contact: <a href="mailto:dsds@teri.res.in">dsds@teri.res.in</a> .
<b>25-29 February</b>	St. Augustine, Trinidad	<a href="#">GSDI 10: Tenth International Conference for Spatial Data Infrastructure</a> , Call for workshop: <u>1 June 2007</u> , Call for paper: <u>15 September 2007</u> .
<b>26-29 February</b> <b>* NEW *</b>	Phitsanulok, Thailand	<a href="#">IEEE-DEST 2008 - 2nd IEEE International Conference on Digital Ecosystems and Technologies</a> , Paper deadline: <u>30 September 2007</u> .
<b>March 2008</b>		
<b>3-5 March</b>	Manama, Bahrain	<a href="#">GEO 2008 - 8th Middle East Geoscience Conference and Exhibition</a> , Abstract deadline extended to <u>4 July 2007</u> . Contact: <a href="mailto:ppryor@aapg.org">ppryor@aapg.org</a> .
<b>12-14 March</b>	Perth, Western Australia	<a href="#">WALIS International Forum 2008 - Management of Geographic Information</a> , Contact: David Lee Steere, <a href="mailto:davidls@walis.wa.gov.au">davidls@walis.wa.gov.au</a> . Abstract deadline: <u>28 September 2007</u> .
<b>April 2008</b>		
<b>8-10 April</b>	Dubai, UAE	<a href="#">Map Middle East 2008</a> , Contact: <a href="mailto:info@mapmiddleeast.org">info@mapmiddleeast.org</a>
<b>May 2008</b>		
<b>10-14 May</b>	Lisbon, Portugal	<a href="#">13<sup>th</sup> FIG Symposium on Deformation Measurements and Analysis (WG 6.1) with the 4<sup>th</sup> IAG Symposium on Seodesy for Geotechnical and Structural Engineering (SC 4.2)</a> – Measuring the Change
<b>June 2008</b>		
<b>14-19 June</b>	Stockholm, Sweden	<a href="#">FIG XXXI General Assembly and Working Week</a> Contact: FIG Office, <a href="mailto:fig@fig.net">fig@fig.net</a> .
<b>30 June-4 July</b>	Xian, China	<a href="#">10th International Symposium on Landslides and Engineered Slopes</a>
<b>July 2008</b>		
<b>1-5 July</b>	Beijing, China	<a href="#">Spatial Accuracy 2008</a> Contact: <a href="mailto:accuracy2008@spatial-accuracy.org">accuracy2008@spatial-accuracy.org</a> .
<b>3-11 July</b>	Beijing, China	<a href="#">XXI ISPRS Congress</a> Contact: Chen Jun, <a href="mailto:congressdirector@isprs2008-beijing.org">congressdirector@isprs2008-beijing.org</a> .
<b>3-11 July</b>	Beijing, China	<a href="#">4th International Symposium on Geospatial Information for Disaster Management (Gi4DM 2008)</a> , Contact: Sisi Zlatanova, <a href="mailto:s.zlatanova@otb.tudelft.nl">s.zlatanova@otb.tudelft.nl</a> .
<b>August 2008</b>		
<b>5-15 August</b>	Oslo, Norway	<b>33rd International Geological Congress (IGC)</b>
<b>September 2008</b>		
<b>1-4 September</b>	Montpellier, France	<a href="#">13th World Water Congress</a> , Theme: Global Changes and Water Resources: Confronting the Expanding and Diversifying Pressures. Contact: <a href="mailto:wwc2008@msem.univ-montp2.fr">wwc2008@msem.univ-montp2.fr</a> .



# Spatial Data Infrastructure - Asia and the Pacific Newsletter



<b>8-11 September</b> <b>* NEW *</b>	Kathmandu, Nepal	<a href="#">The Tenth International Symposium on High Mountain Remote Sensing Cartography</a> , Deadline for submission of abstracts: February 1, 2008
<b>29 September–3 October</b>	Darwin, Australia	<a href="#">14<sup>th</sup> Australasian Remote Sensing &amp; Photogrammetry Conference (ARSPC)</a>
<b>October 2008</b>		
<b>5-8 October</b>	Kyiv, Ukraine	<a href="#">21st International CODATA Conference</a> , Scientific Information for Society - from Today to the Future. Contact: <a href="mailto:codata@codata08.org.ua">codata@codata08.org.ua</a> .
<b>5-14 October</b>	Barcelona, Spain	<a href="#">World Conservation Congress</a> , Contact: <a href="mailto:congress@iucn.org">congress@iucn.org</a> .
<b>13-17 October</b>	Nanjing, China	<a href="#">4th World Urban Forum</a> , Organized by UN-Habitat.
<b>March 2009</b>		
<b>15-22 March</b>	Istanbul, Turkey	<a href="#">5th World Water Forum</a> , Contact: <a href="mailto:m.giard@worldwatercouncil.org">m.giard@worldwatercouncil.org</a> .
<b>May 2009</b>		
<b>3-8 May</b>	Eilat, Israel	<a href="#">FIG Working Week and XXXII General Assembly – New Horizons across the Red Sea – Surveyors Key Role in Accelerated Development</a> , Contact: <a href="mailto:fig@fig.net">fig@fig.net</a>
<b>June 2009</b>		
<b>15-19 June</b>	Rotterdam, The Netherlands	<a href="#">11th International Conference on Global Spatial Data Infrastructure (GSDI 11)</a>
<b>August 2009</b>		
<b>2-15 August</b>	Rio de Janeiro, Brazil	<a href="#">XXVII General Assembly of the International Astronomical Union</a>
<b>April 2010</b>		
<b>9-16 April</b>	Sydney, Australia	<a href="#">International Federation of Surveyors (FIG) 2010</a> , Contact: <a href="mailto:info@isaust.org.au">info@isaust.org.au</a>
<b>April/May 2010</b>		
<b>April/May</b>	Marrakech, Morocco	<b>FIG Working Week and General Assembly</b>
<b>May 2012</b>		
<b>April/May</b> <b>* UPDATED *</b>	<b>Rome/Italy</b>	<a href="#">FIG Working Week 2012</a>

To subscribe to SDI-AP, please do so online at:

<http://www.gsdi.org/newslist/gsdisubscribe.asp>

To unsubscribe, or change your email address, contact:

<http://www.gsdi.org/newslist/gsdisubscribe.asp#existingsubscriber>

Changsup Han, Editor, [chan@usgs.gov](mailto:chan@usgs.gov), [sdi-ap@gsdi.org](mailto:sdi-ap@gsdi.org).

Global Spatial Data Infrastructure Association

<http://www.gsdi.org>

Copyright © 2007. All rights reserved.

### DISCLAIMER

The Editor and Web Host will not be held liable for any errors, mistakes, misprints or incorrect information.